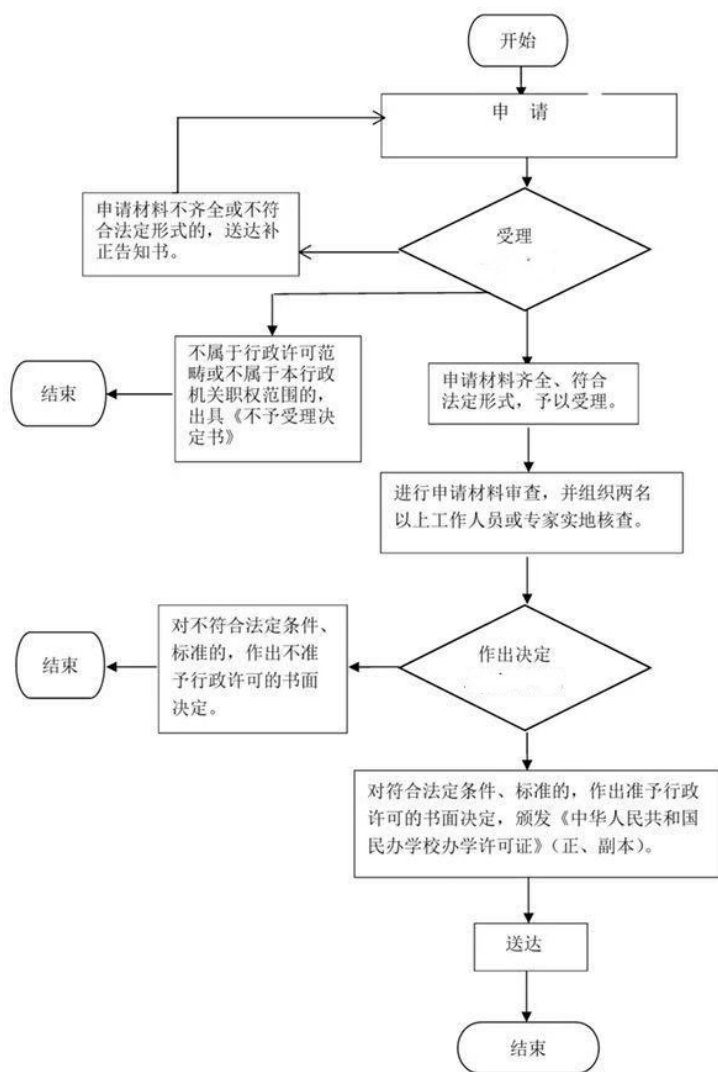
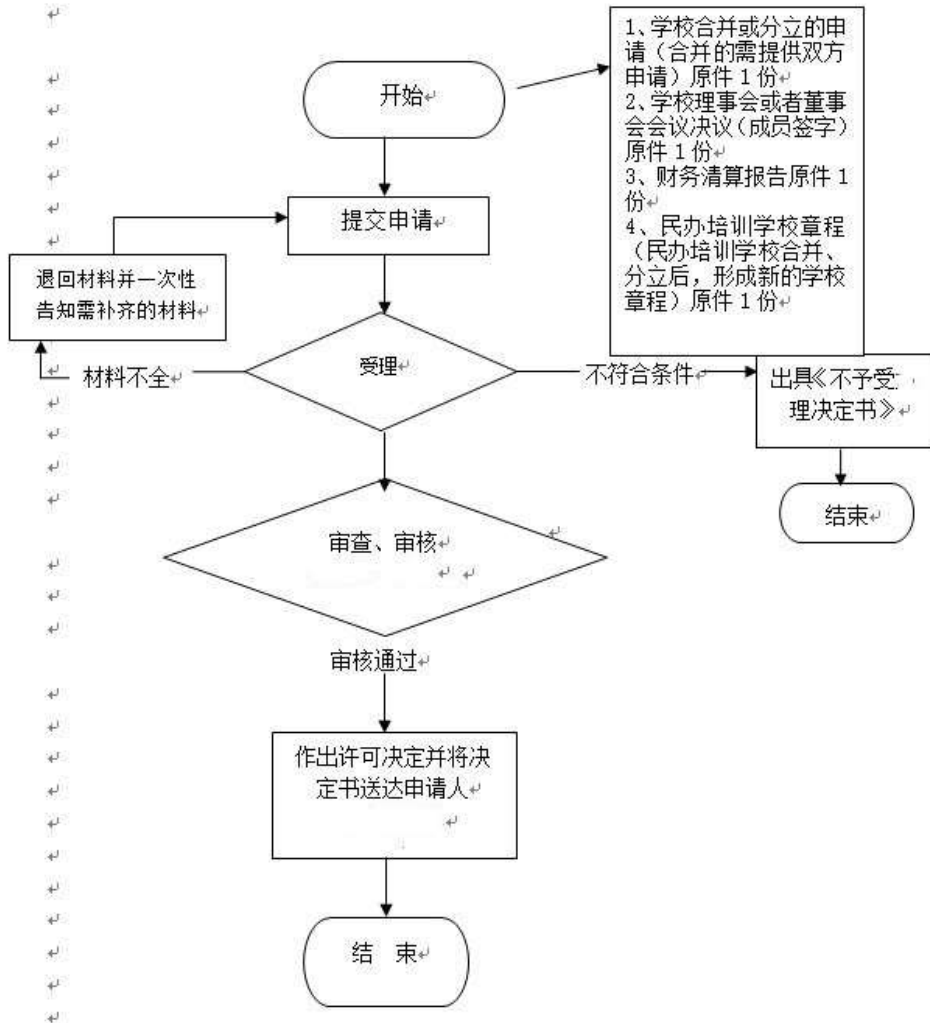


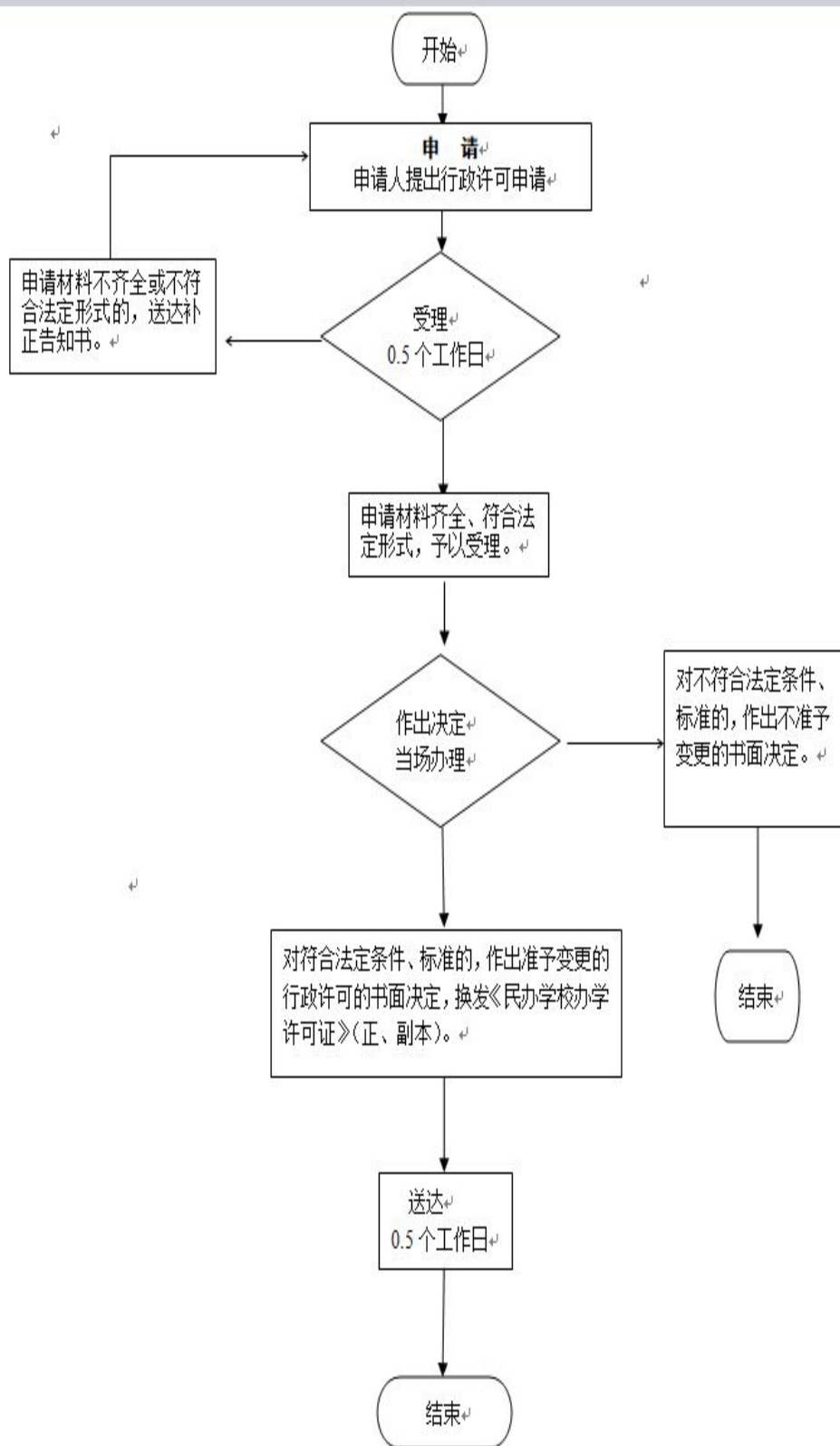
## 民办职业培训学校设立审批流程图



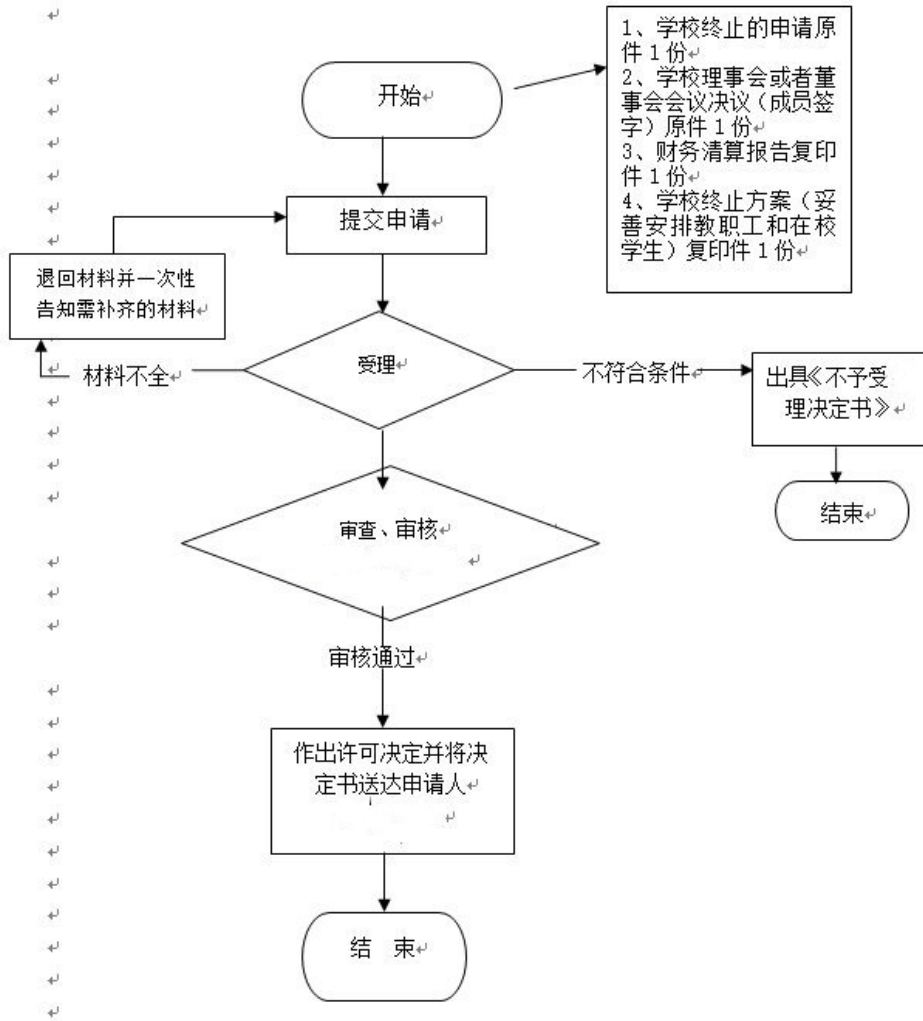
## 民办职业培训学校的分立、合并审批流程图



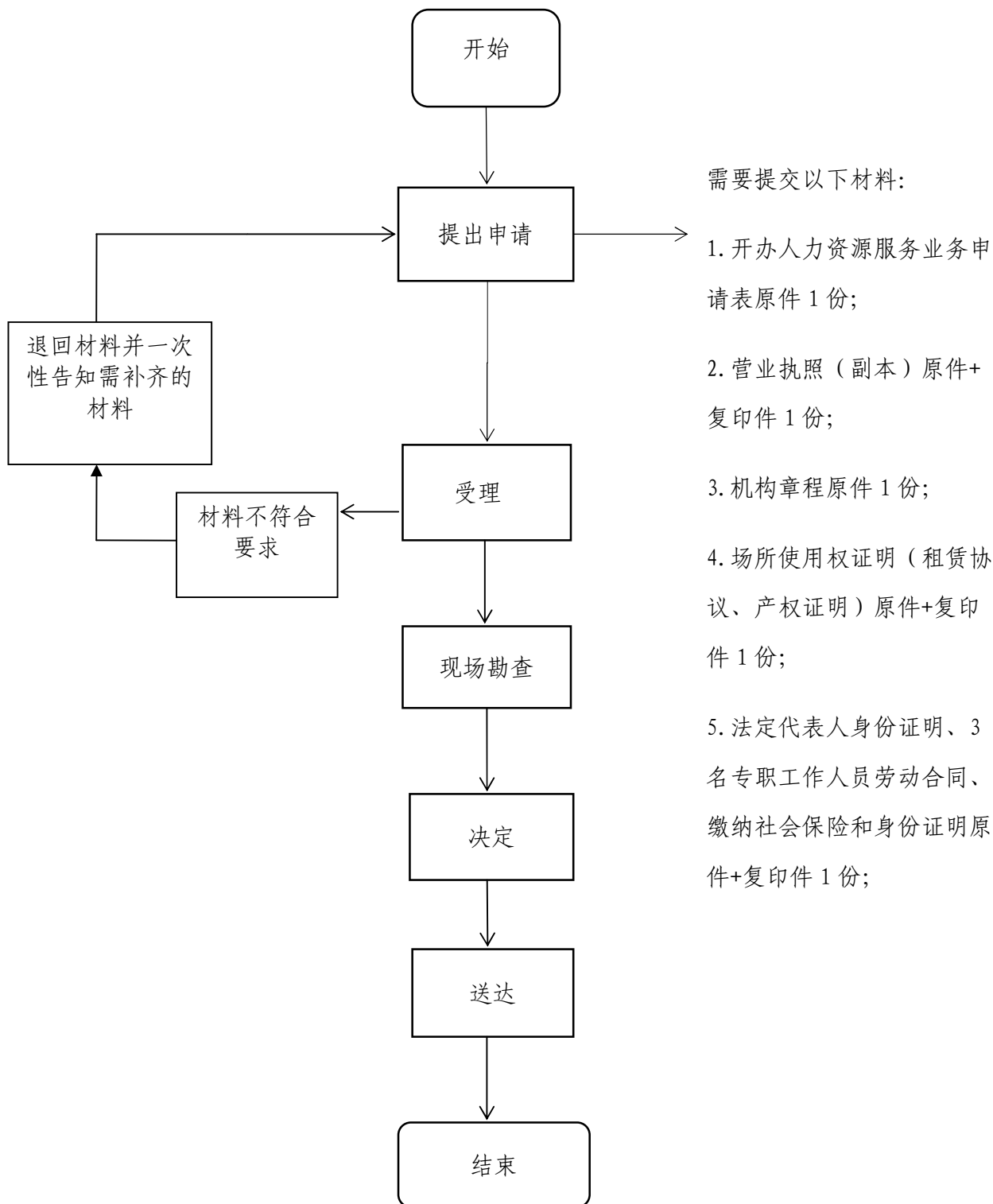
## 民办职业培训学校变更审批流程图



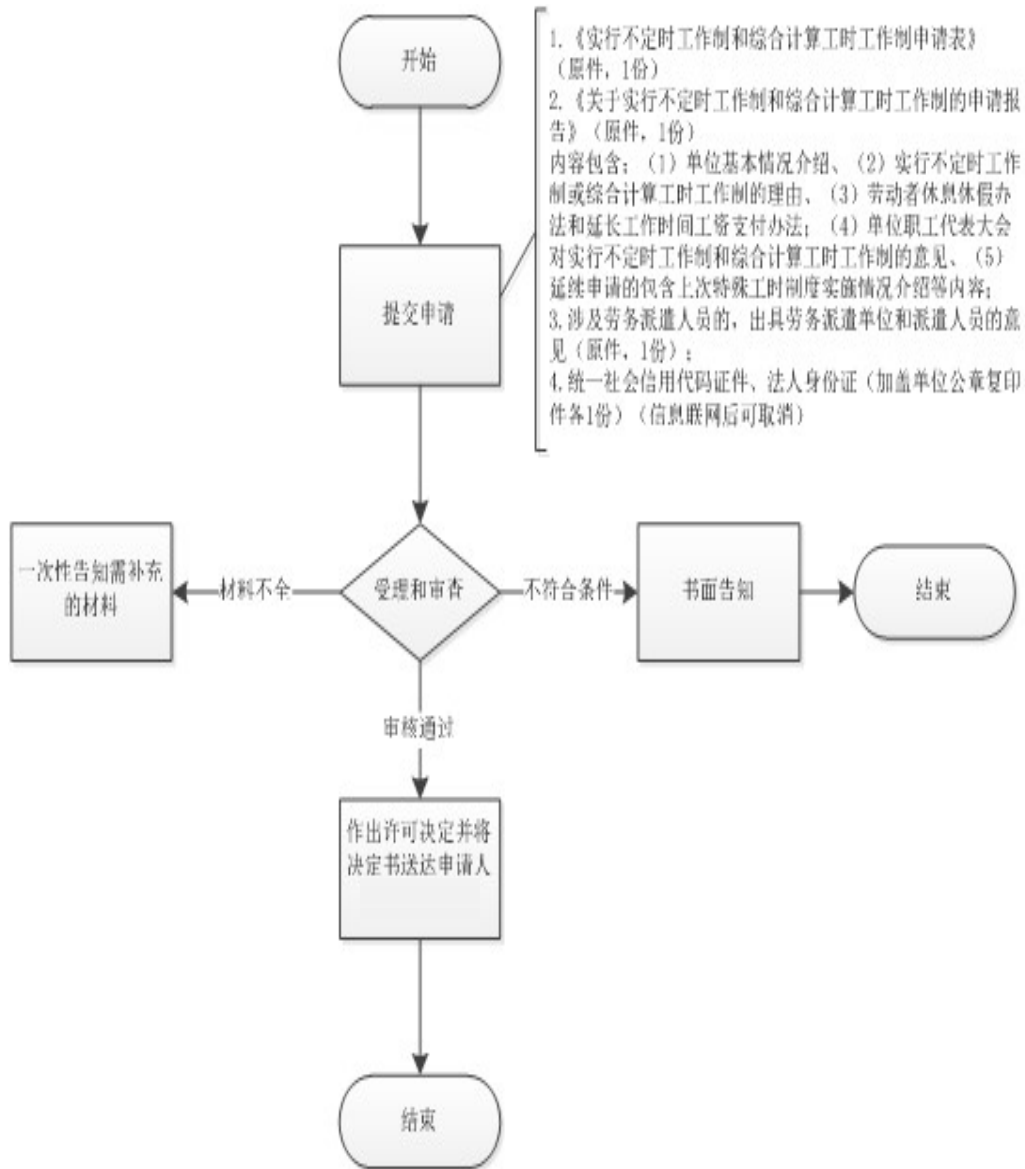
## 民办职业培训学校的终止审批流程图



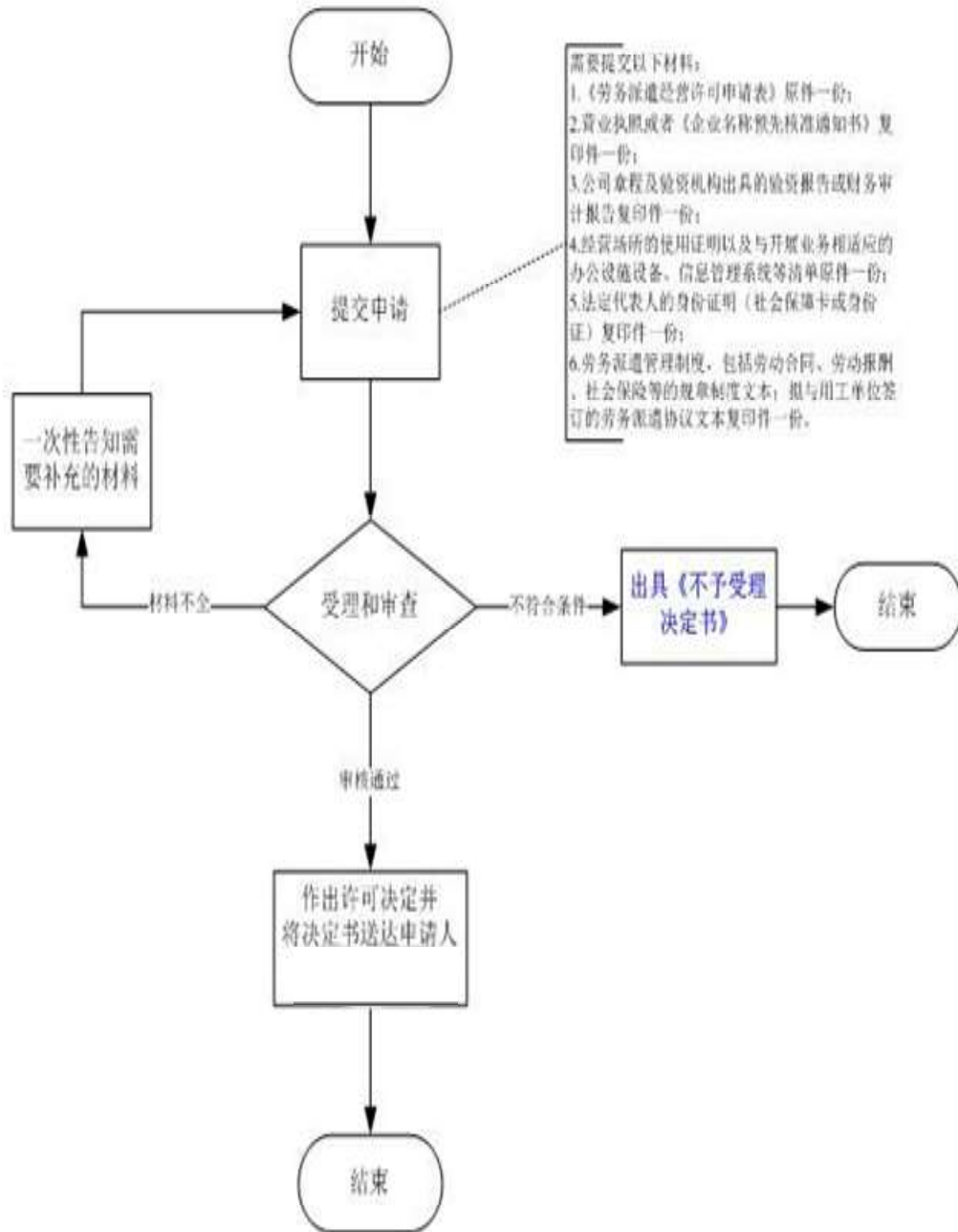
## 人力资源服务许可审批办事流程图



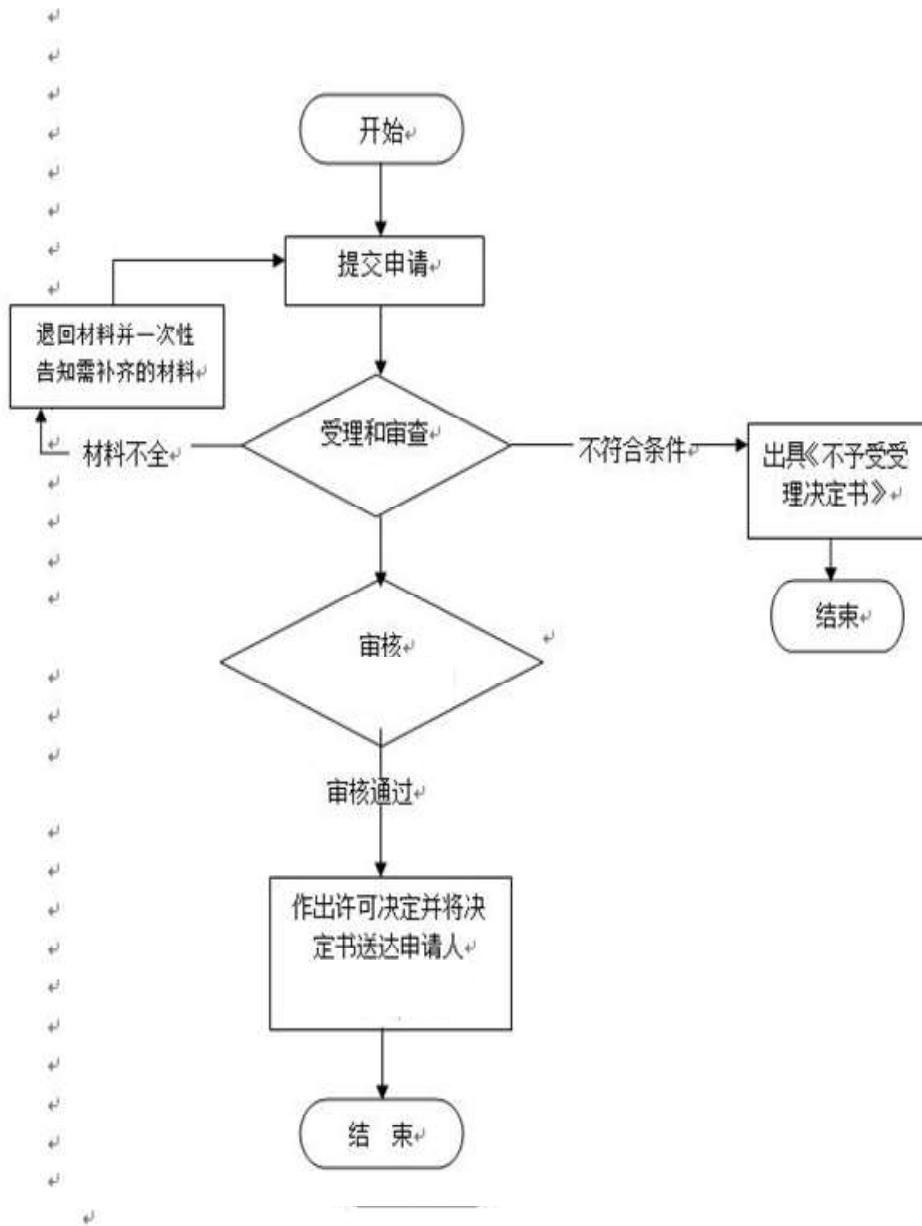
## 企业实行不定时工作制度和综合计算工时工作制审批流程图



## 劳务派遣经营许可证办事流程图

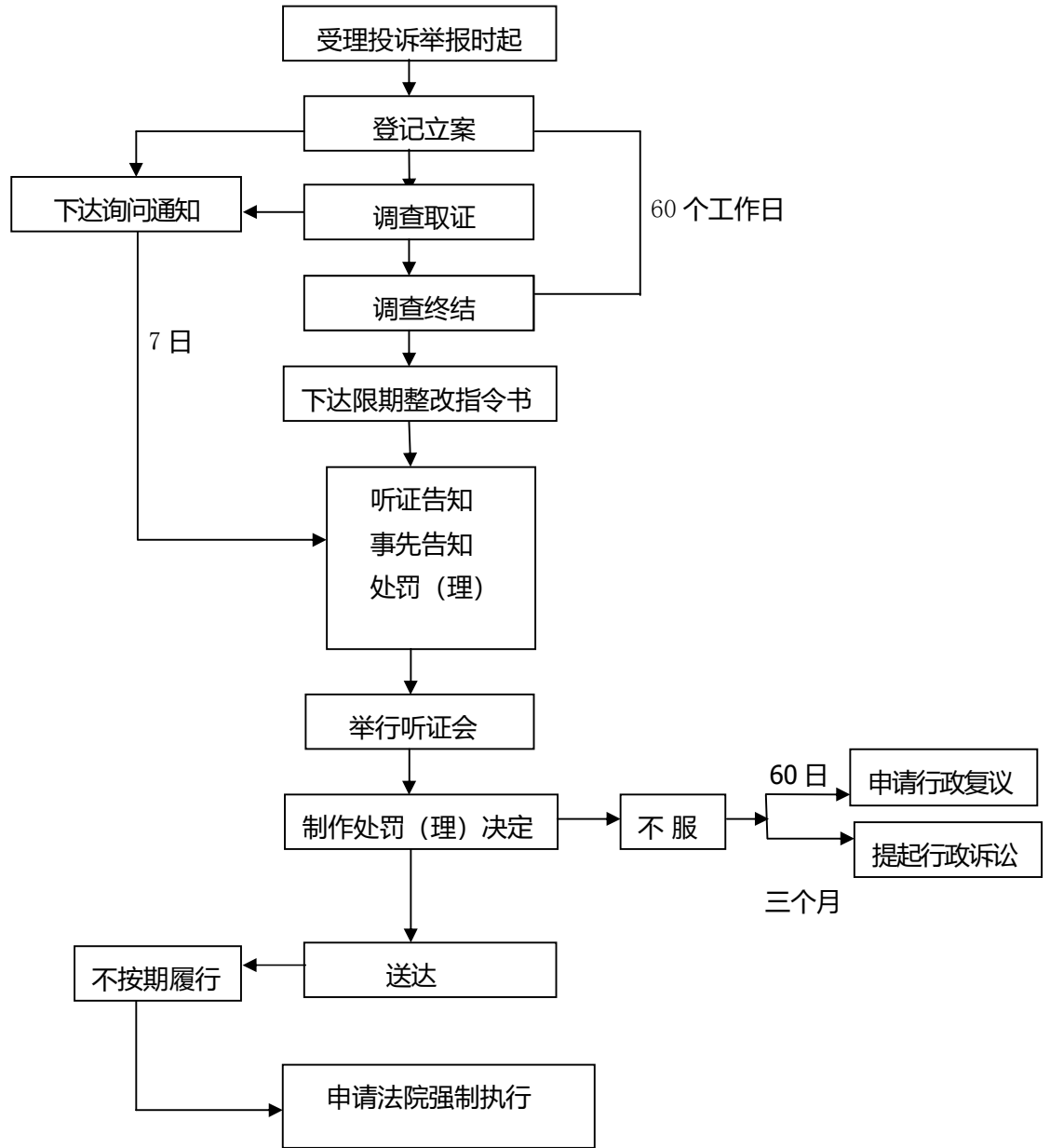


## 劳务派遣变更、延续、注销许可运行流程图

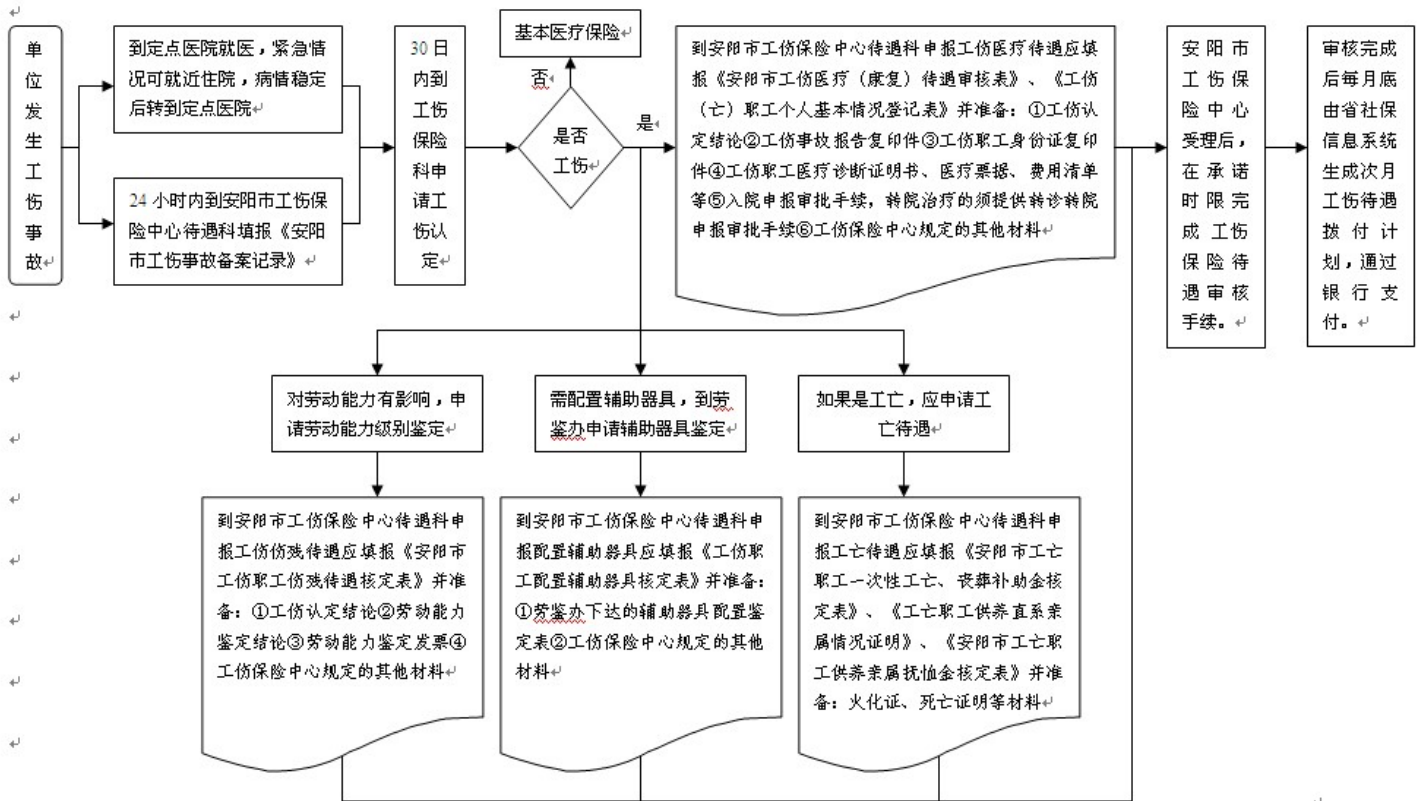




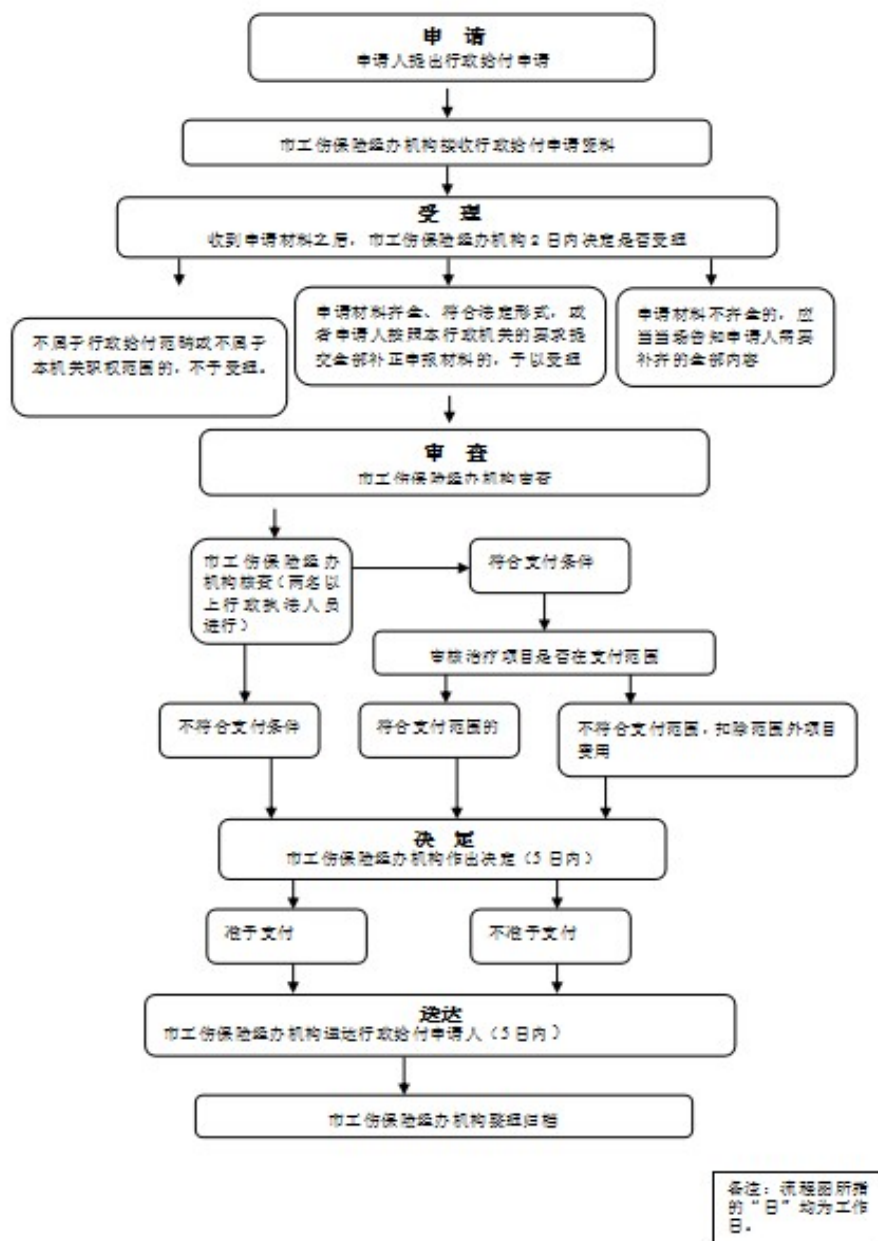
# 劳动保障监察程序流程图



## 工伤保险待遇申报、支付流程图



# 先予支付工伤保险待遇流程图



# 社会保险（机关事业单位养老保险）待遇给付

## 流程图

### 编制拨付计划申报

通过业务信息系统向服务器发起编制拨付计划申请，服务器根据申请自动编制拨付计划

### 拨付计划核对、制定

经办人员根据当月业务经办环节传递的退休人员新增、待遇修改、待遇停发、死亡终止等信息核对拨付计划，确认无误后通过业务信息系统将业务流依次推送给复核、审核、审批人员，生成拨付计划

### 财务制单

财务人员对接付计划进行确认，审核无误后通过业务信息系统自动制单

### 拨付计划与财务制单一致性检查

审计稽核人员核对拨付计划与财务制单数据是否一致，确认无误后通过业务信息系统自动生成发放数据

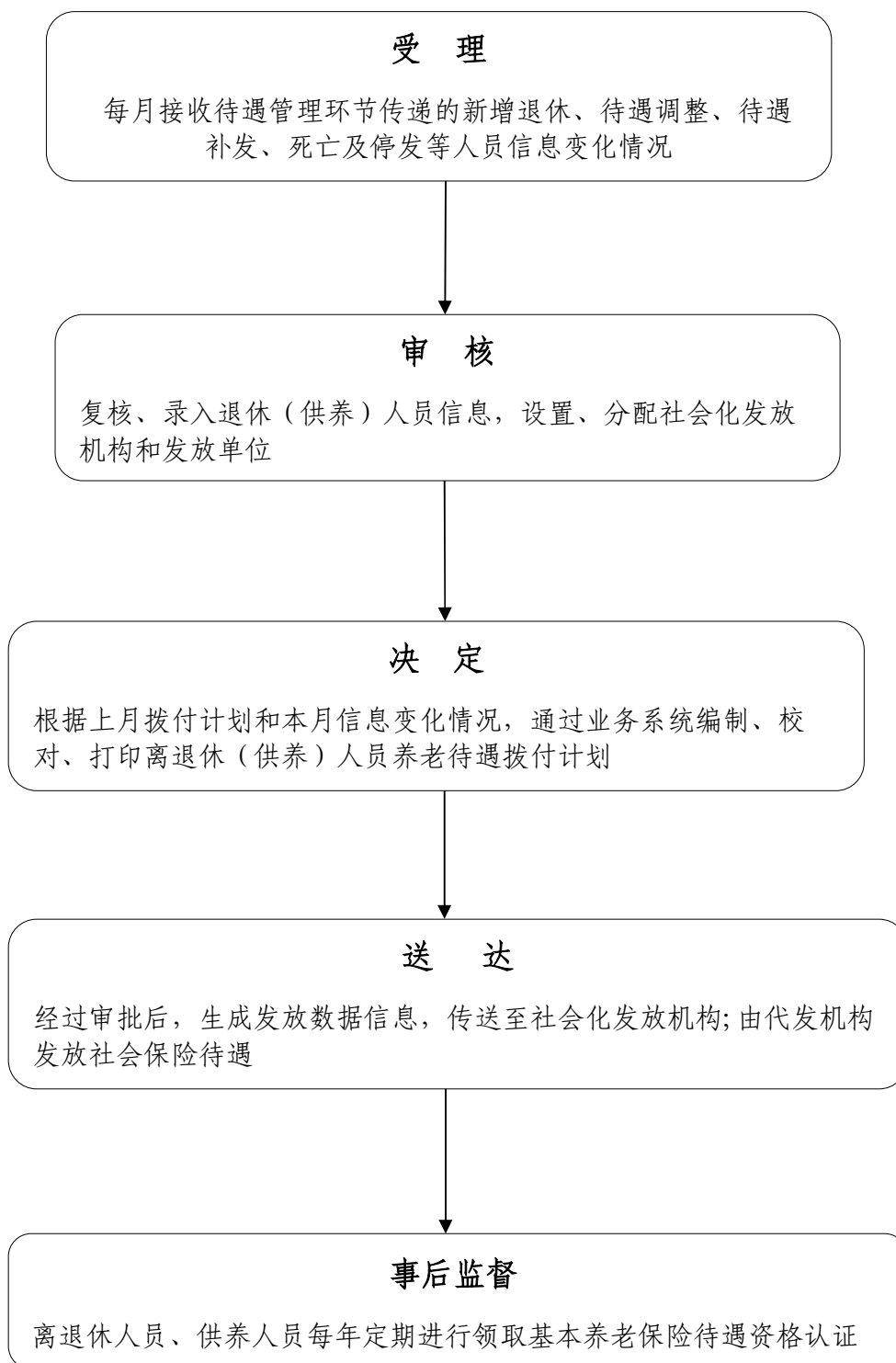
### 养老保险待遇线上支付

经办人员发起待遇支付，确认无误后，通过业务信息系统经复核、审核、审批环节后，将发放数据线上传送给发放银行，进行社会化发放

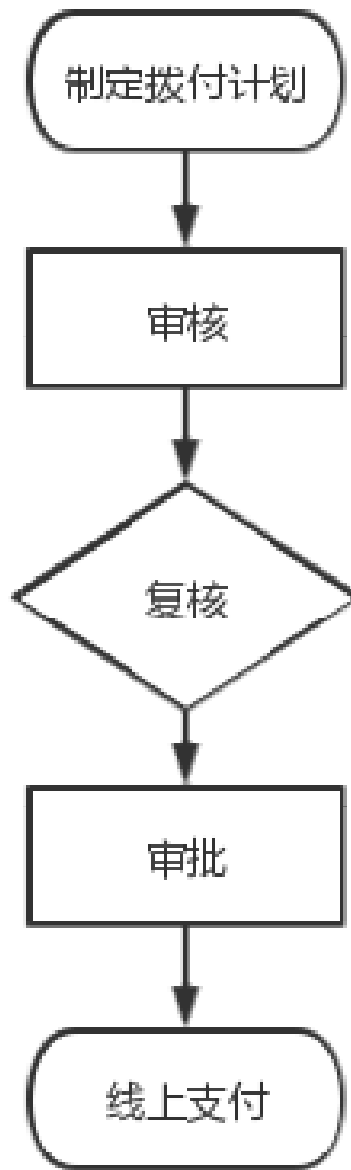
### 事后监督

每年定期组织退休人员领取基本养老保险待遇资格认证

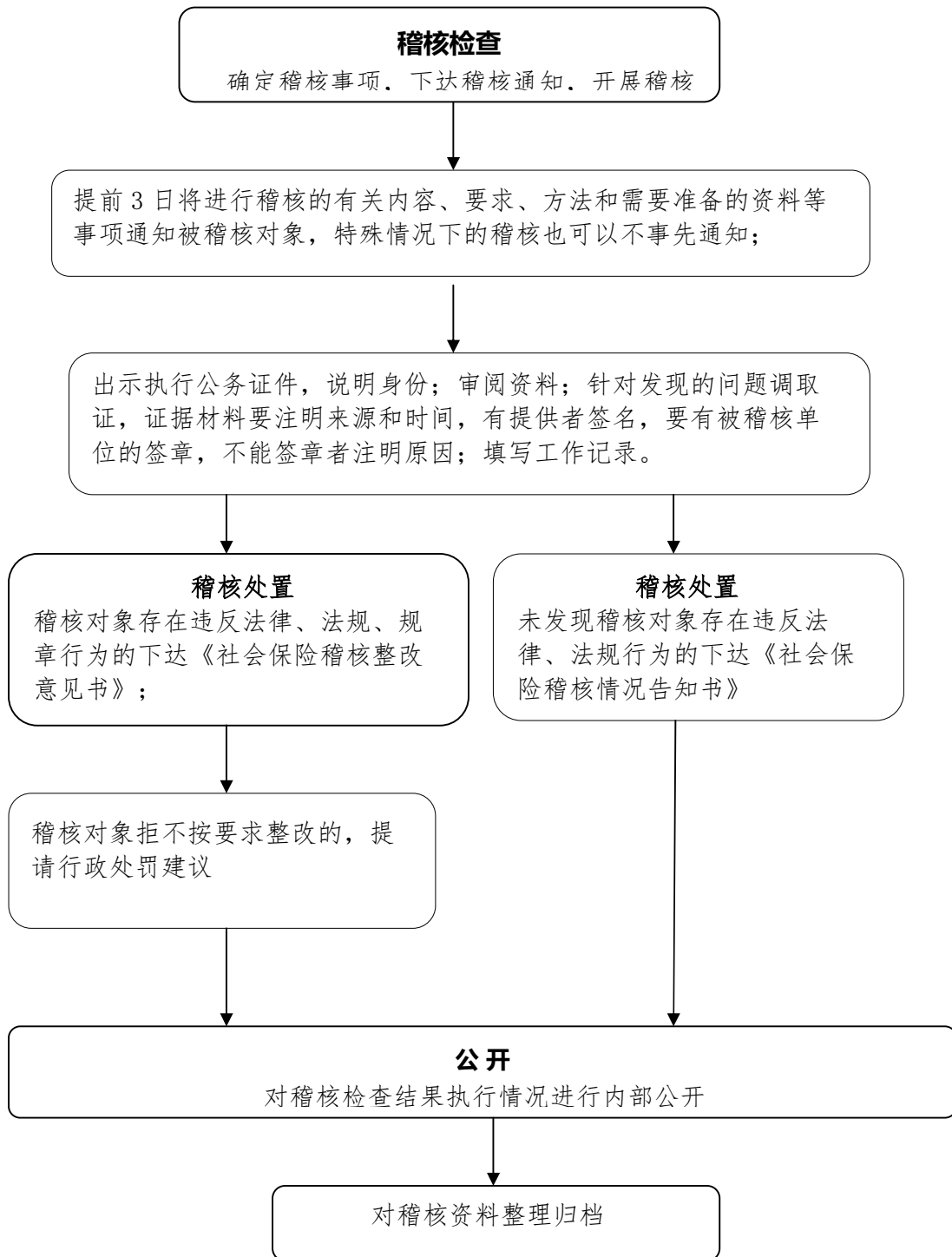
## 社会保险(企业职工基本养老保险)待遇给付流程图



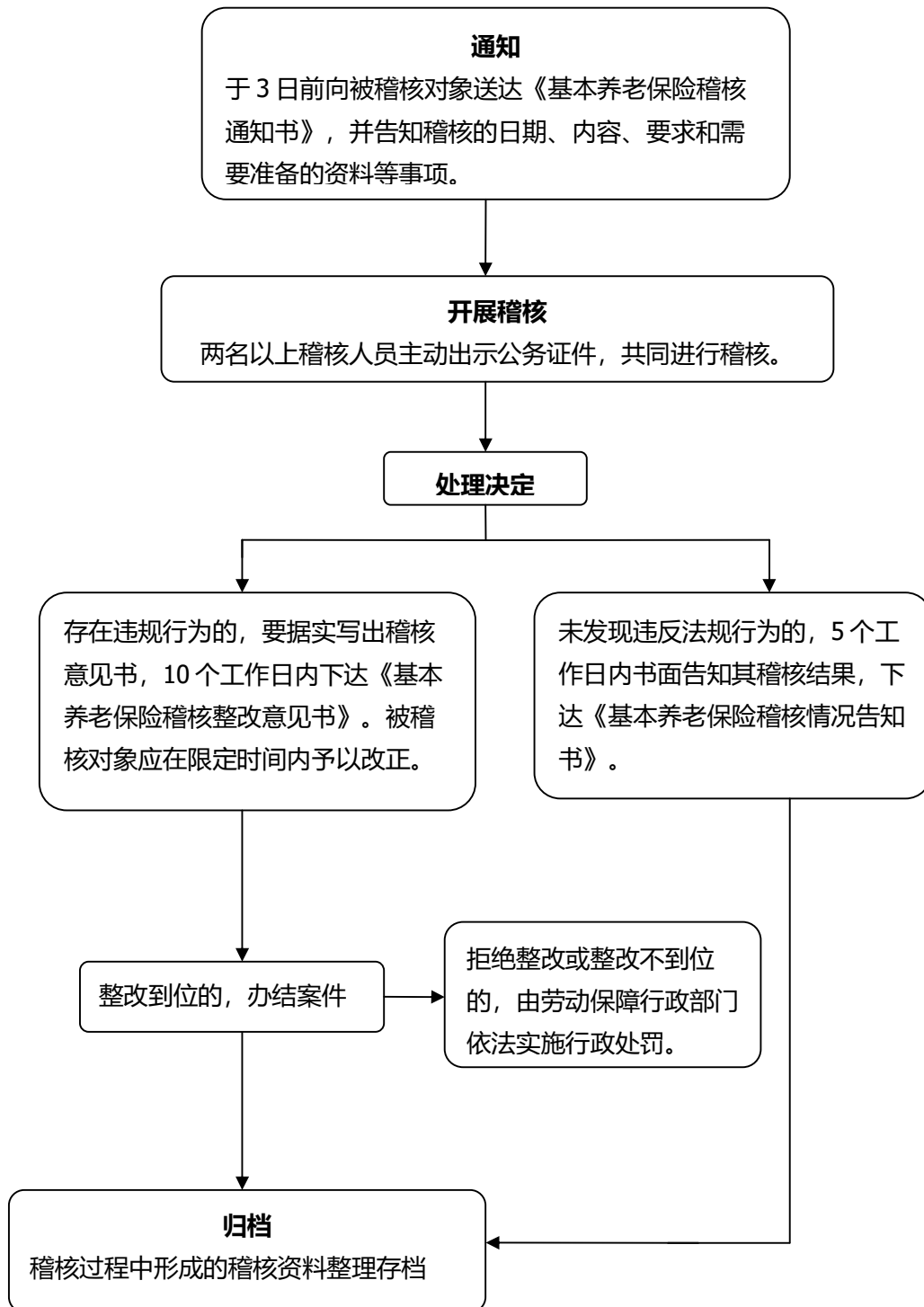
## 社会保险(失业保险)待遇给付流程图



## 社会保险（企业职工基本养老保险）稽核流程图：

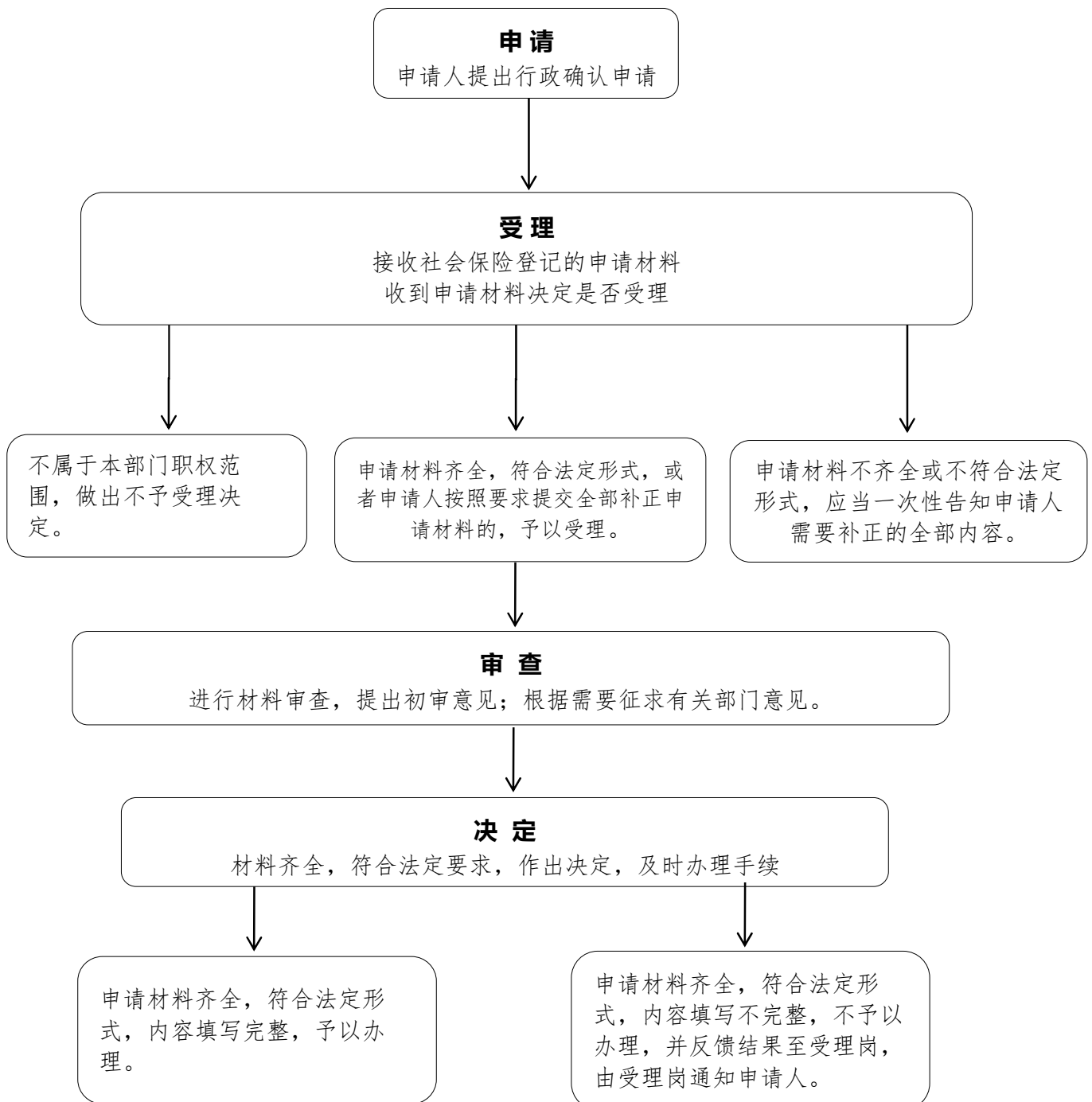


## 社会保险（机关事业单位养老保险）稽核流程图：

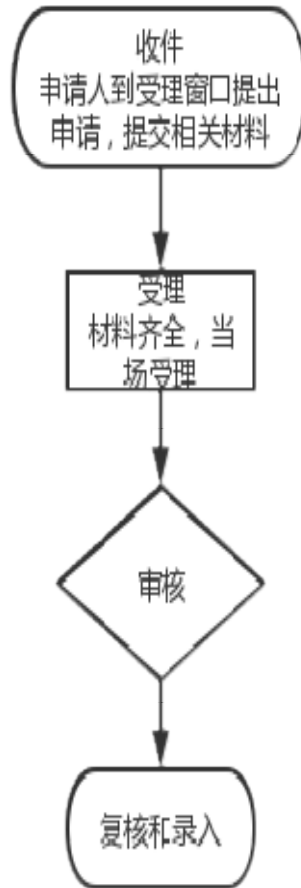




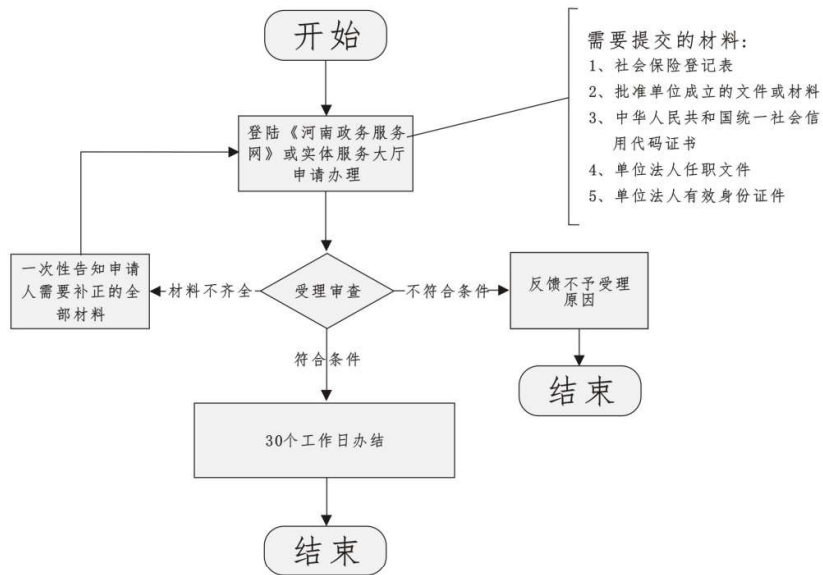
## 企业社会保险（企业职工基本养老保险）登记流程图：



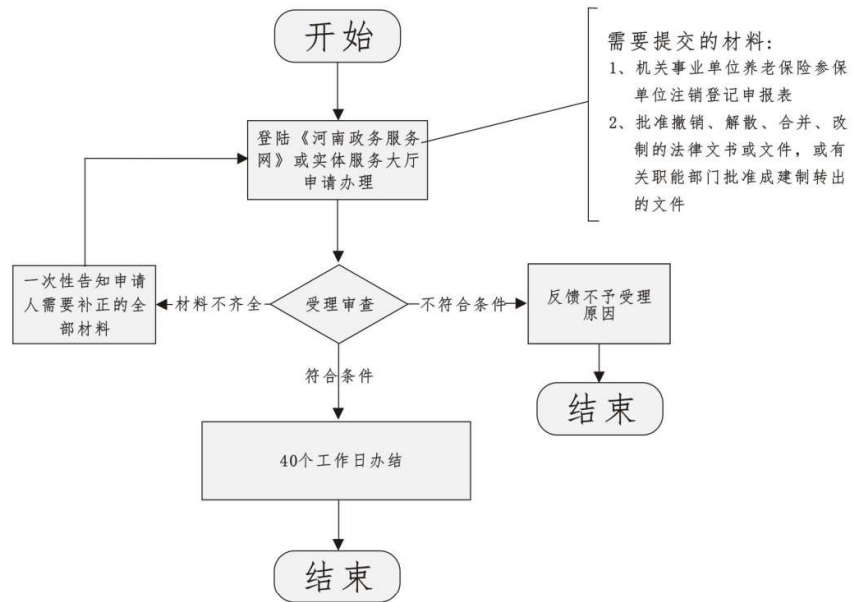
## 企业社会保险（失业保险）登记流程图



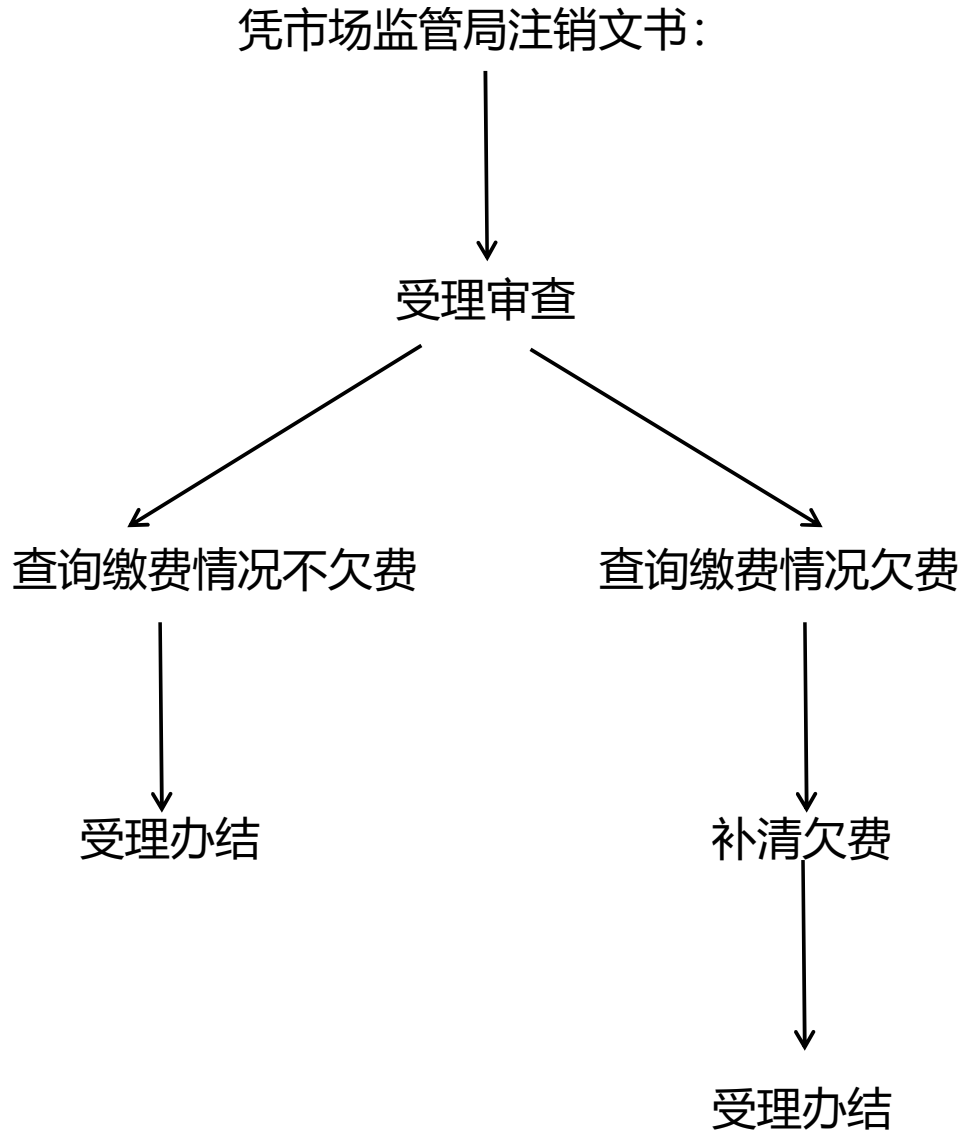
# 机关事业单位社会保险登记流程图



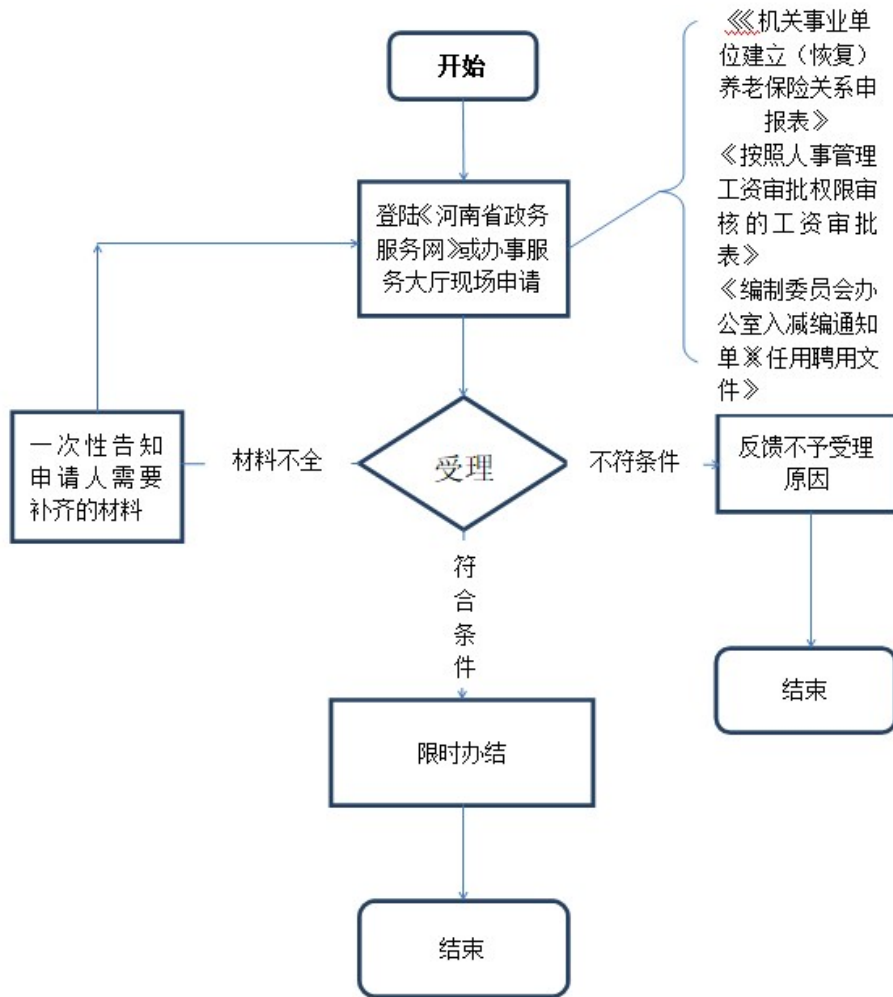
## 参保单位注销（机关事业单位养老保险）流程图



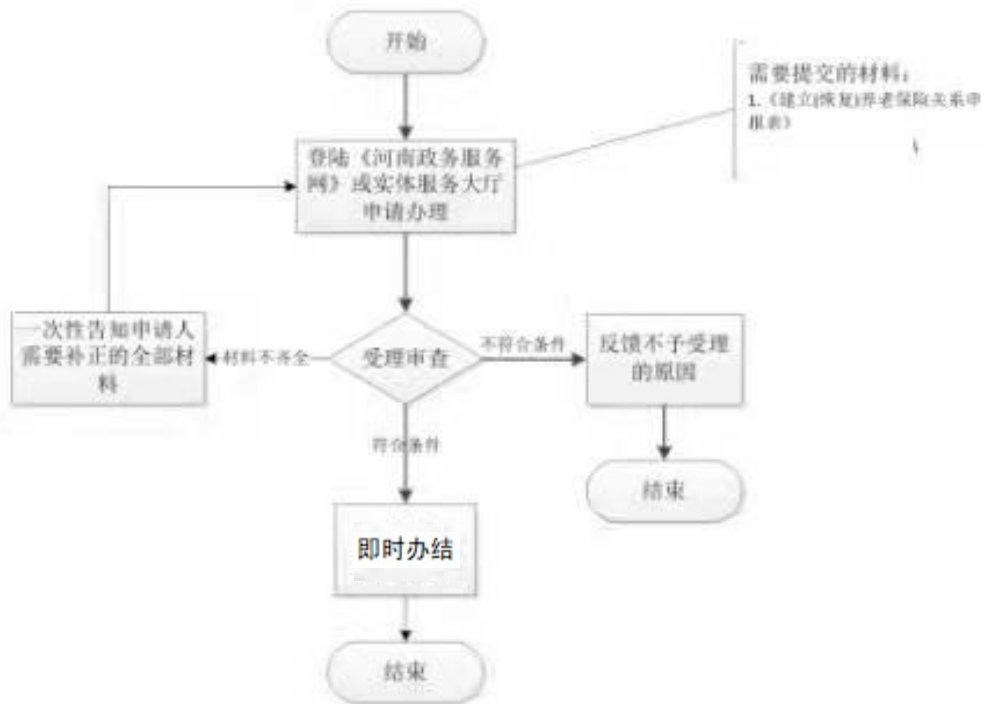
参保单位注销（企业基本养老保险）流程图



# 职工参保登记（机关事业单位养老保险）流程图



## 职工参保登记（企业职工基本养老保险）流程图

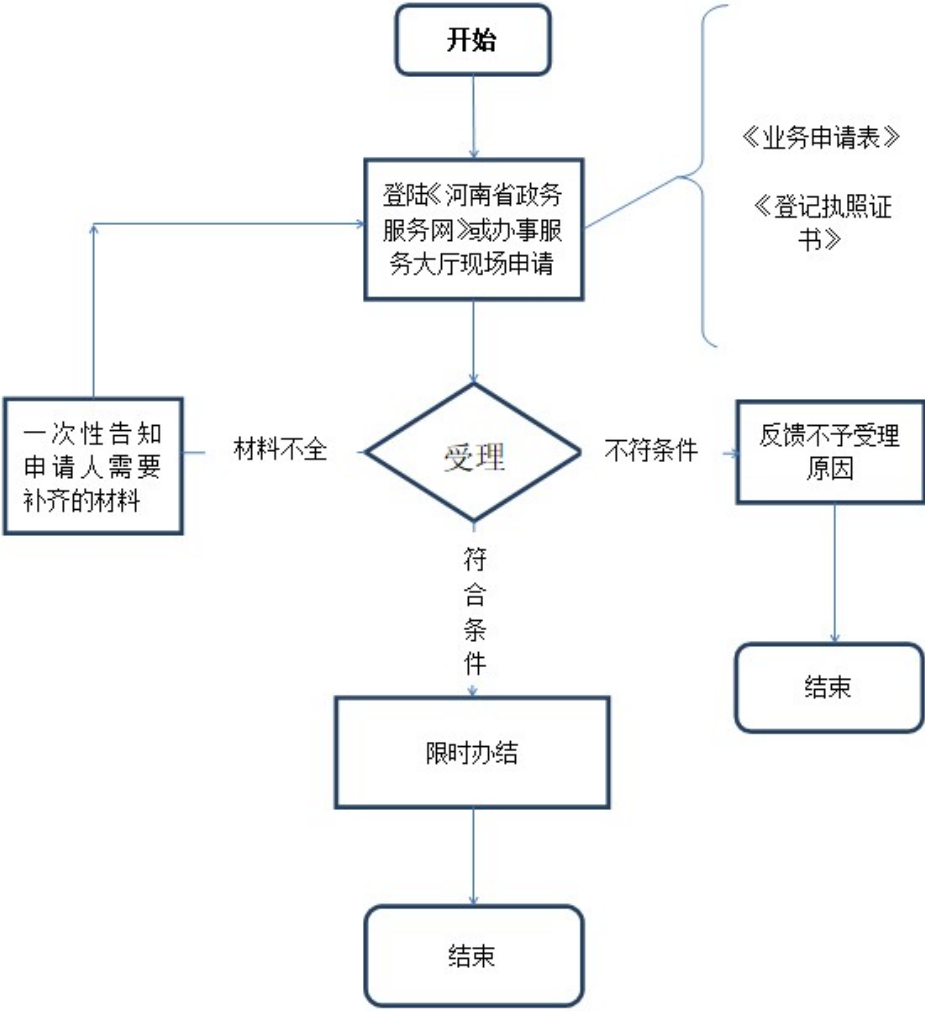


# 职工参保登记（失业保险）流程图

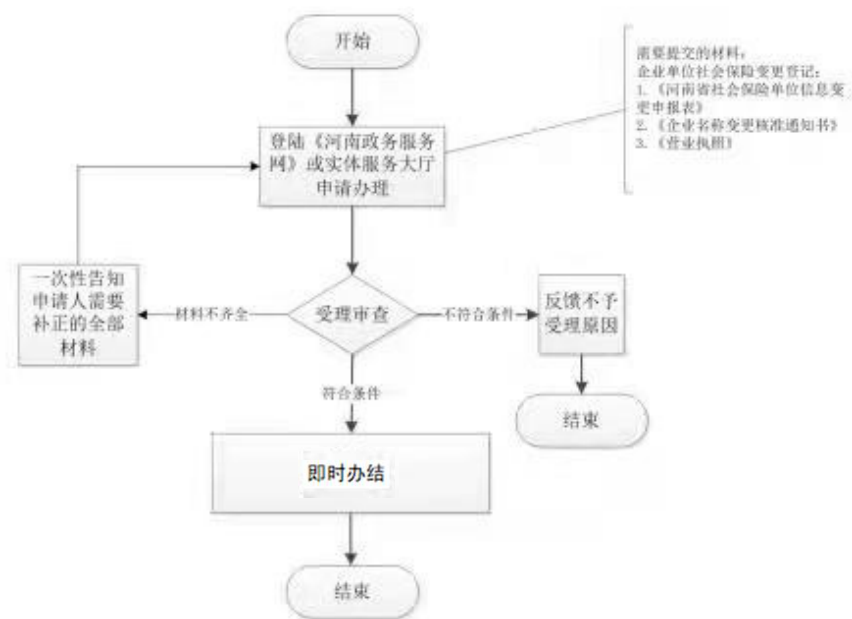




单位（项目）基本信息（机关事业单位养老保险）变更流程图



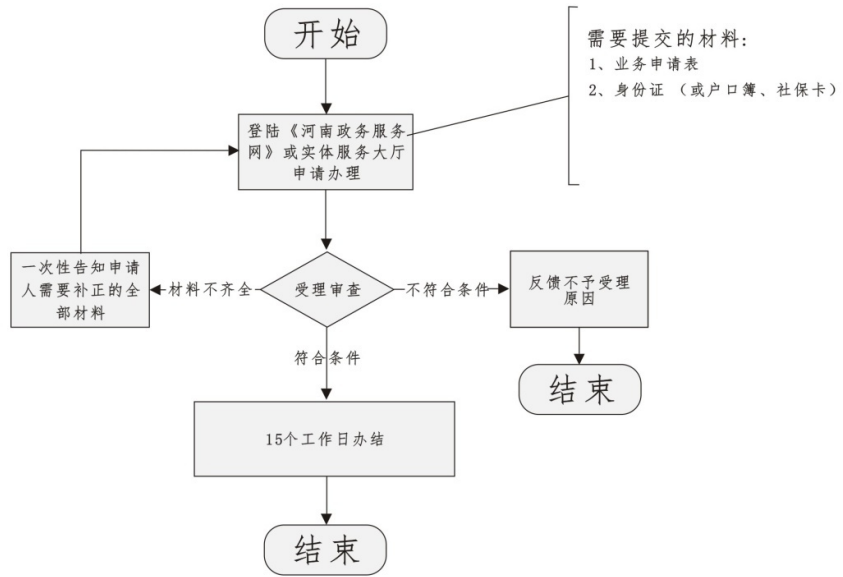
## 单位（项目）基本信息（企业职工基本养老保险）变更流程图



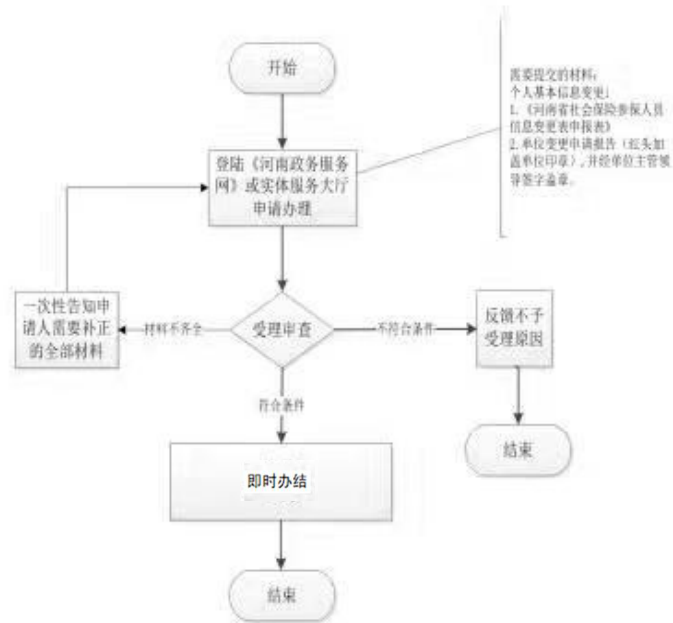
## 单位（项目）基本信息（失业保险）变更流程图



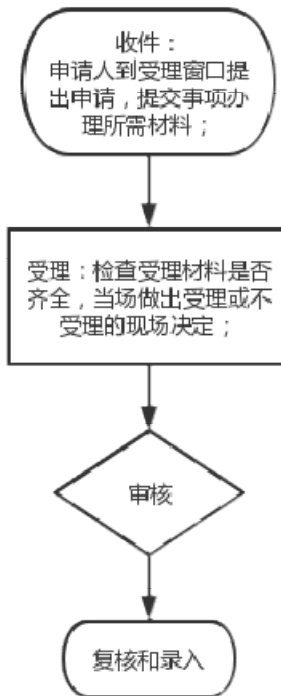
# 机关事业单位在职人员基本信息变更流程图



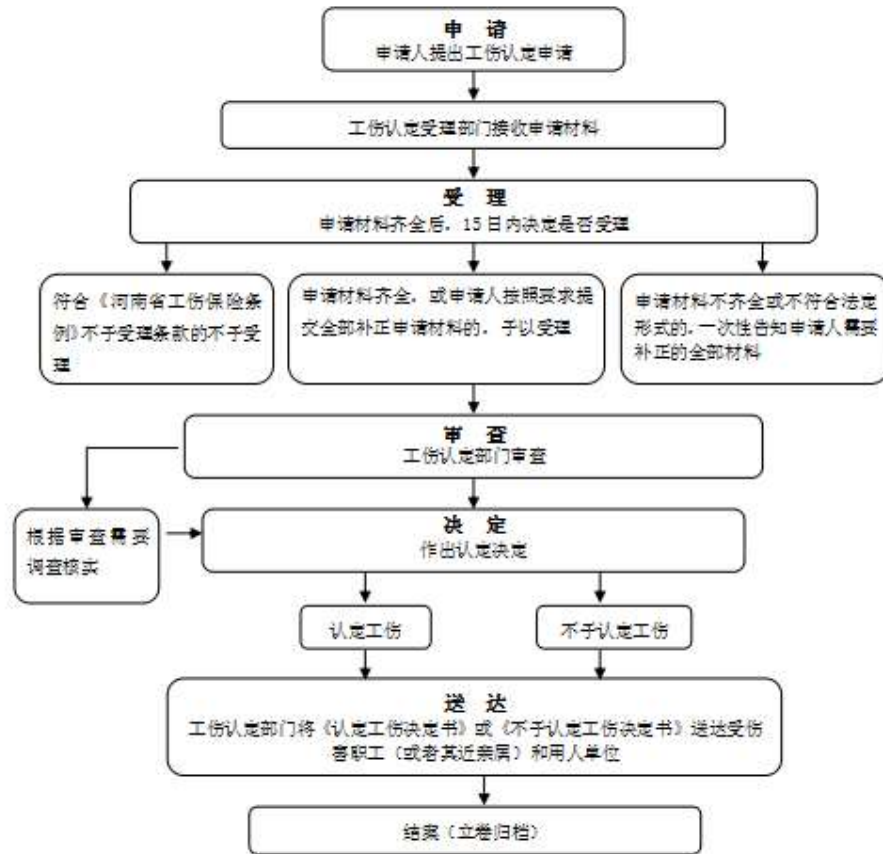
## 个人基本信息变更（企业职工基本养老保险）流程图



## 个人基本信息变更（失业保险）流程图

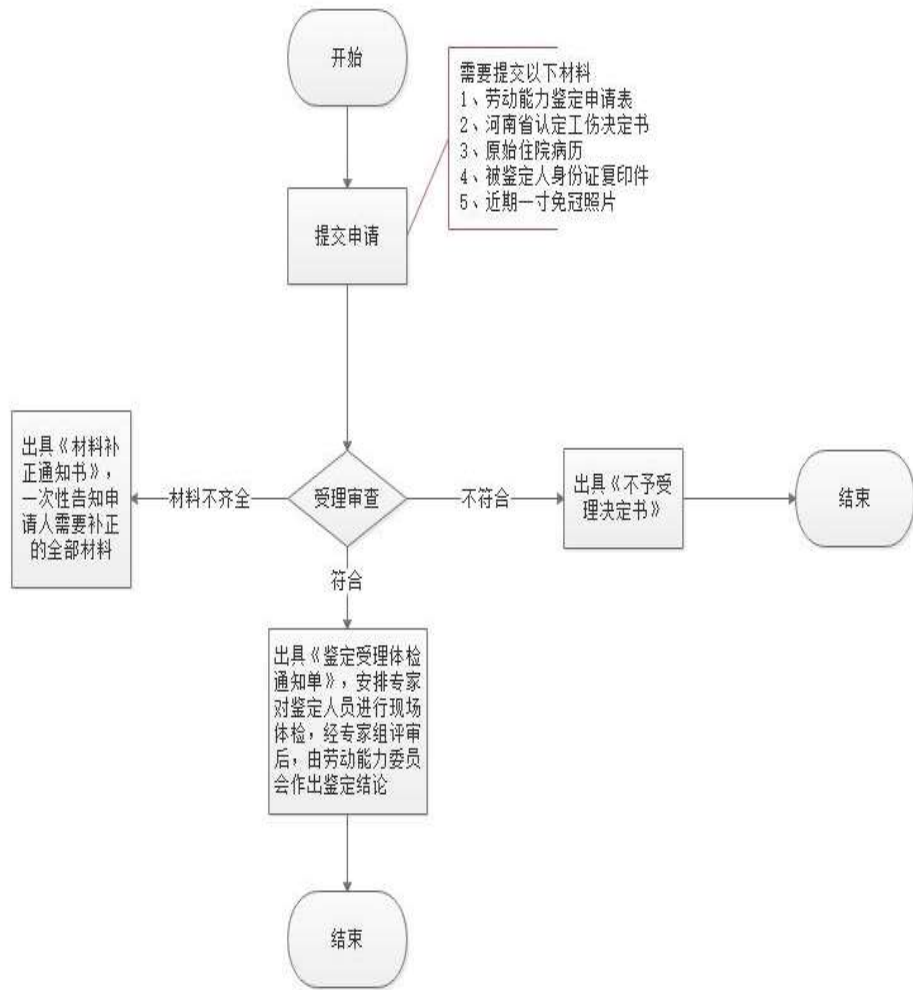


# 职工工伤认定流程图



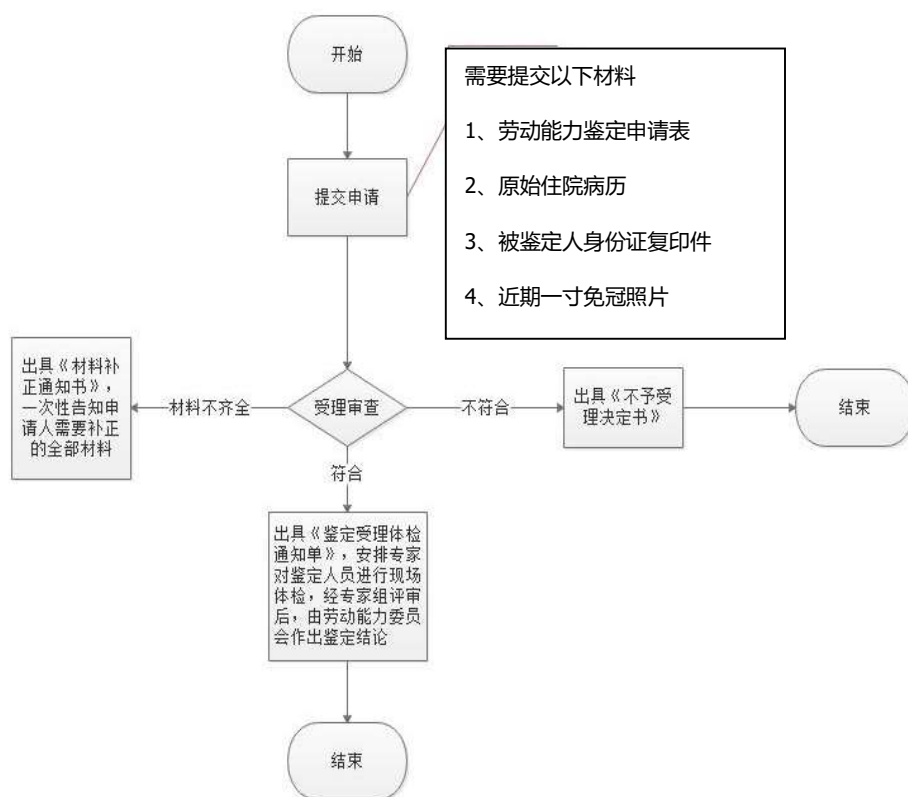
备注：流程图  
所指的“日”  
均为工作日。

# 工伤职工伤残等级鉴定办事流程图

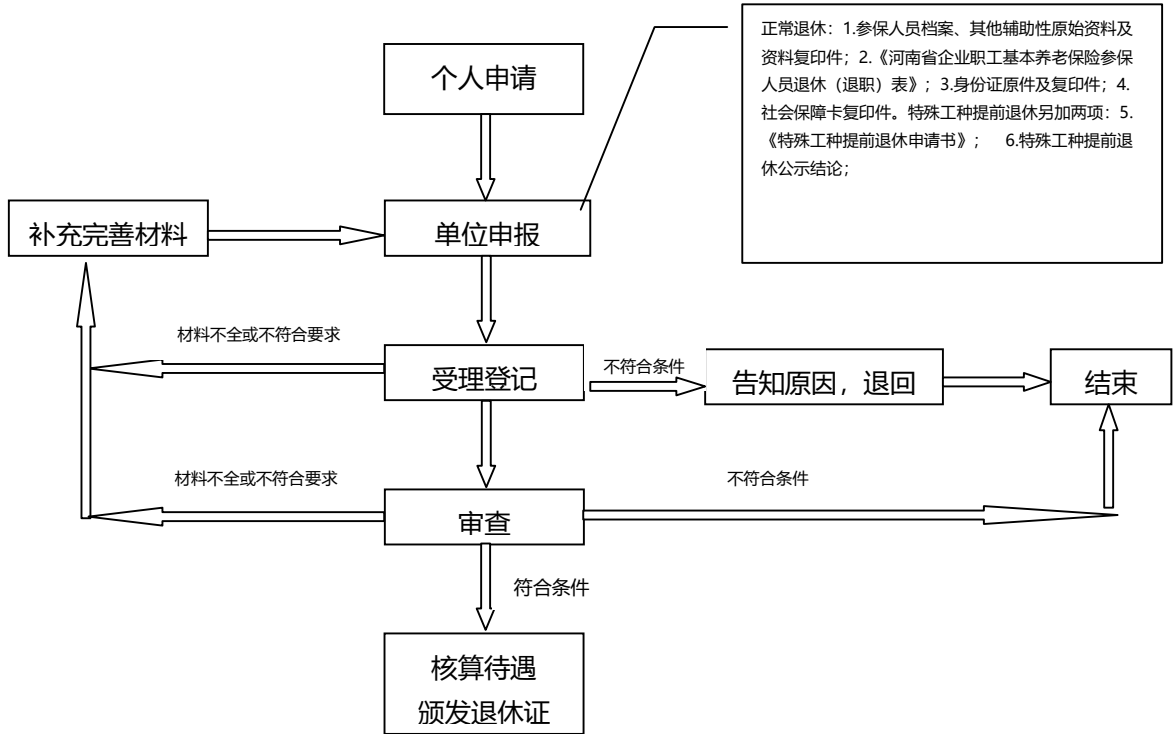




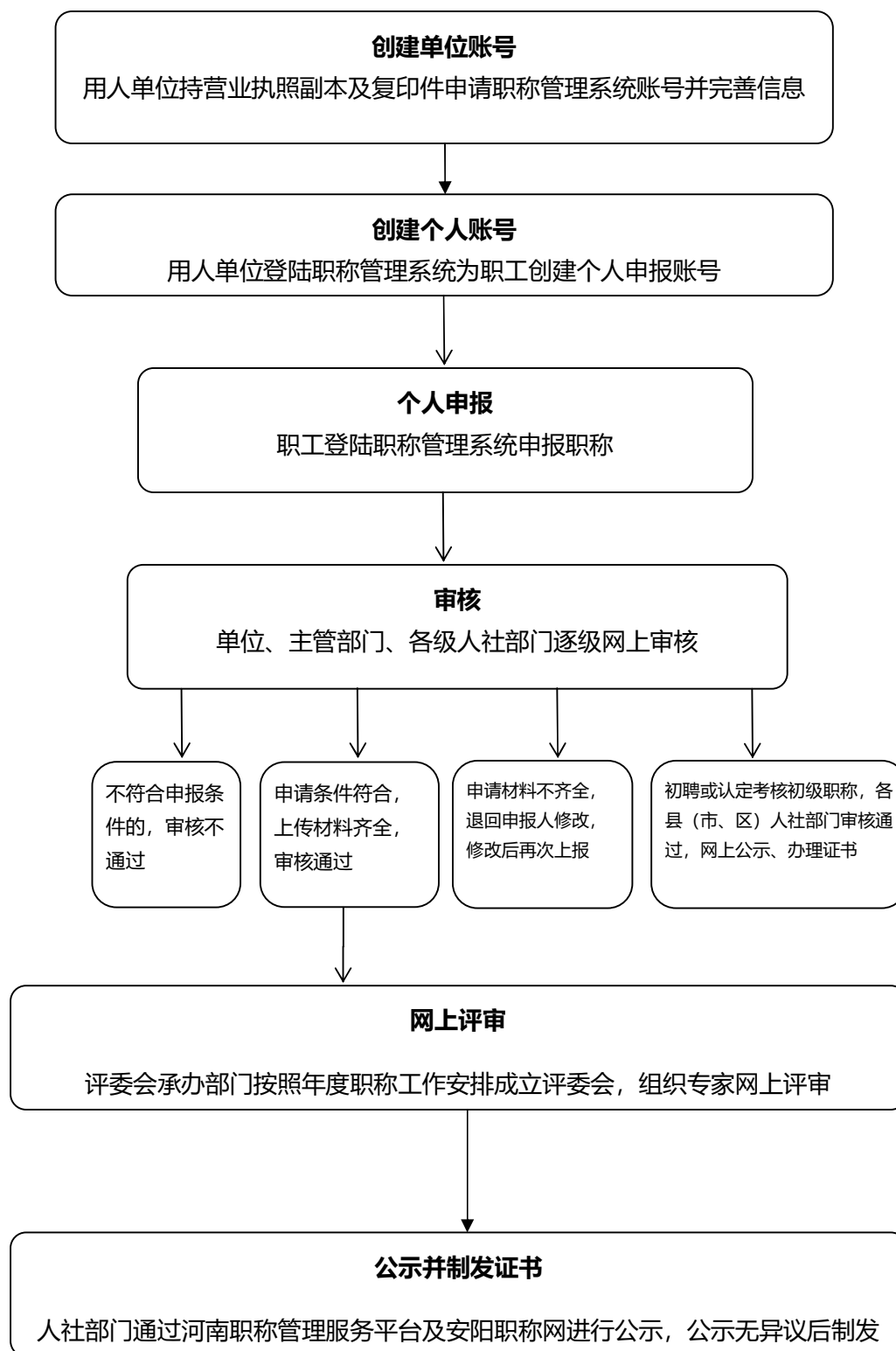
## 非因工伤残或因病丧失劳动能力程度鉴定办事流程图



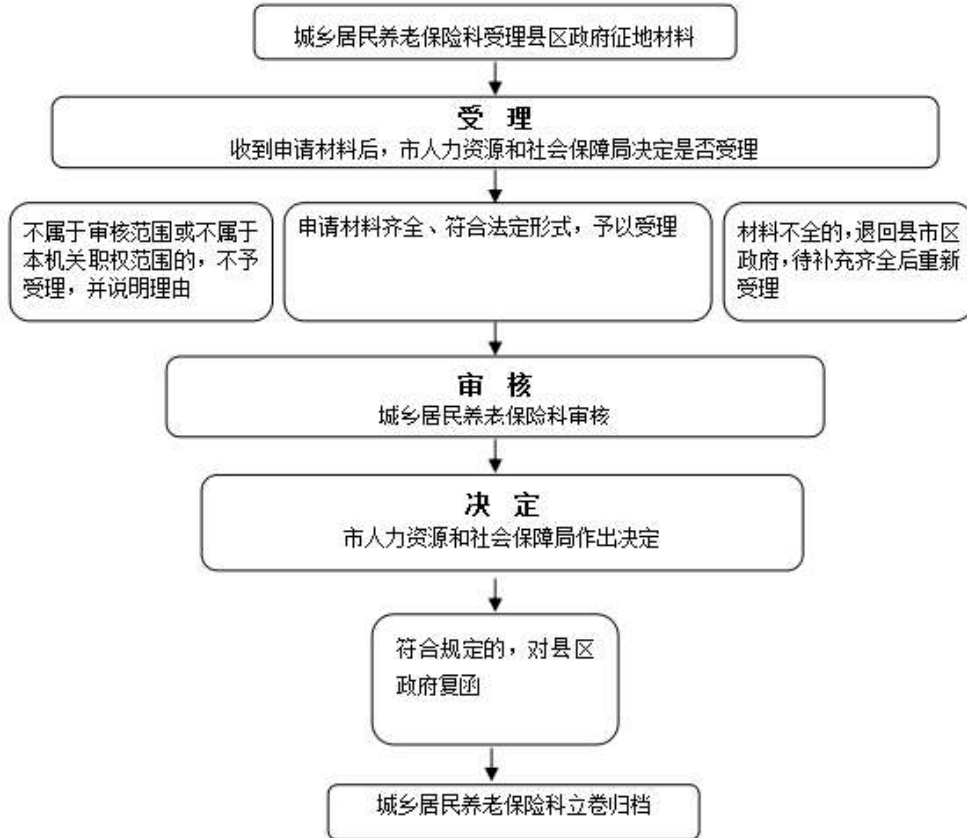
# 市直参保人员退休手续办理流程图



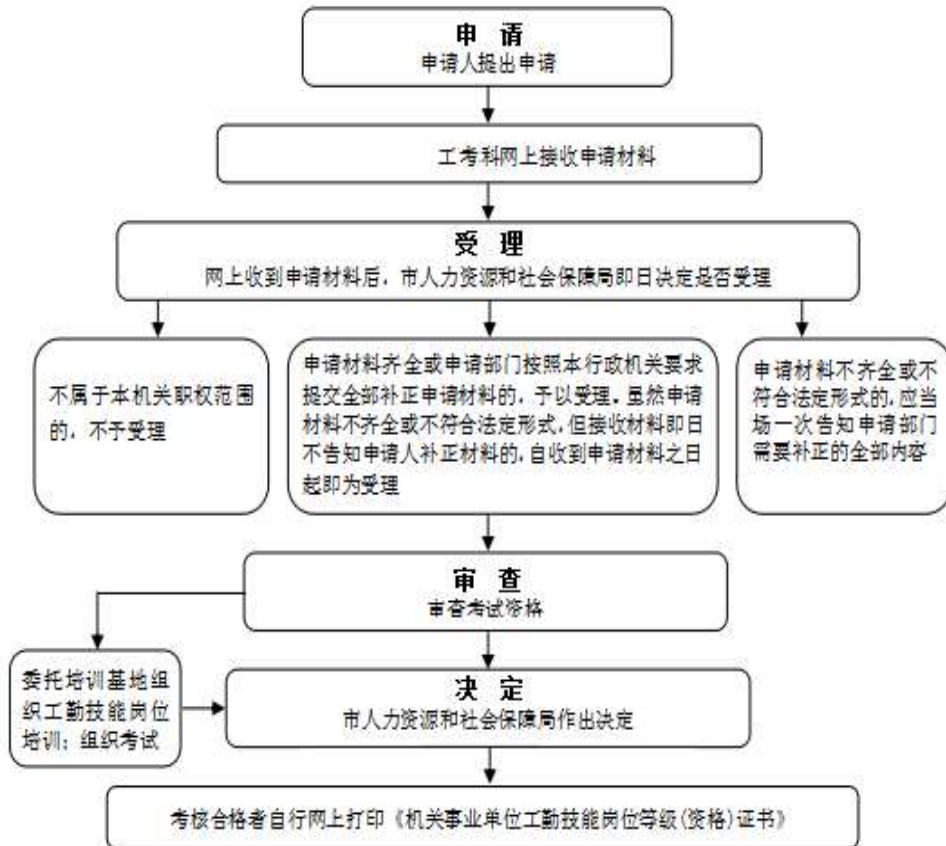
# 职称申报评审流程图



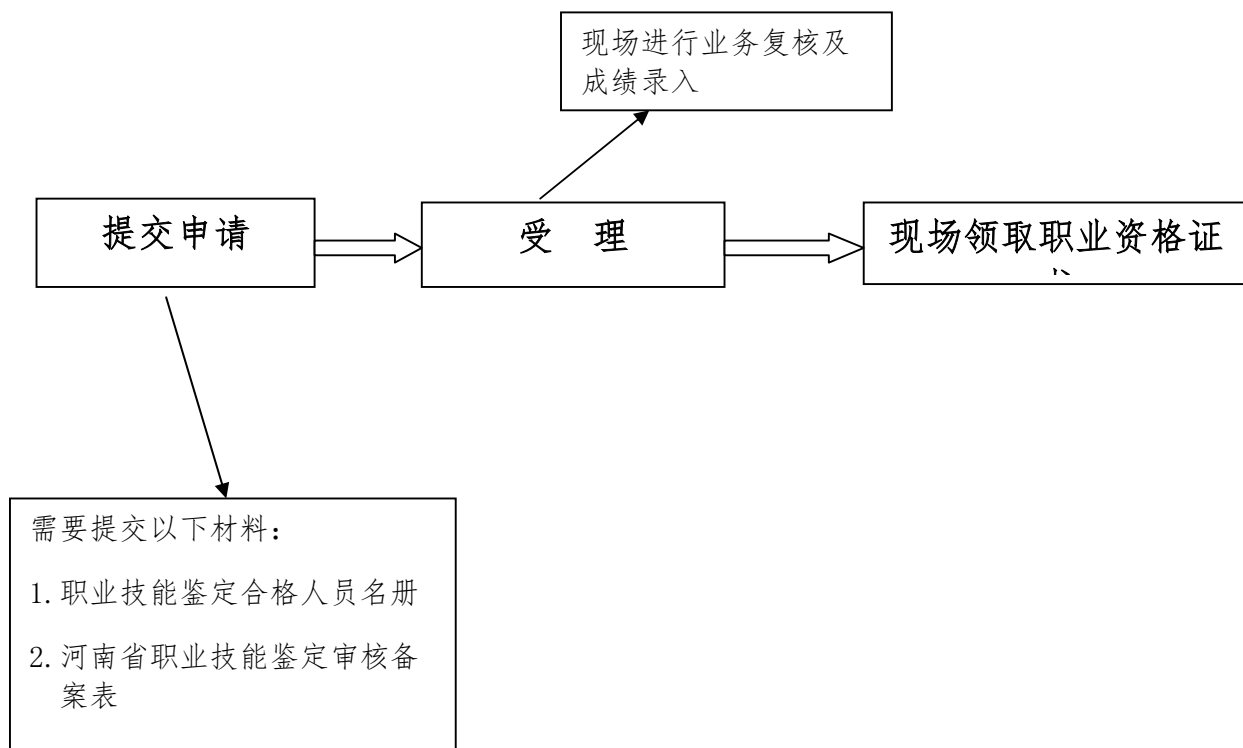
## 被征地农民社会保障情况审核流程图



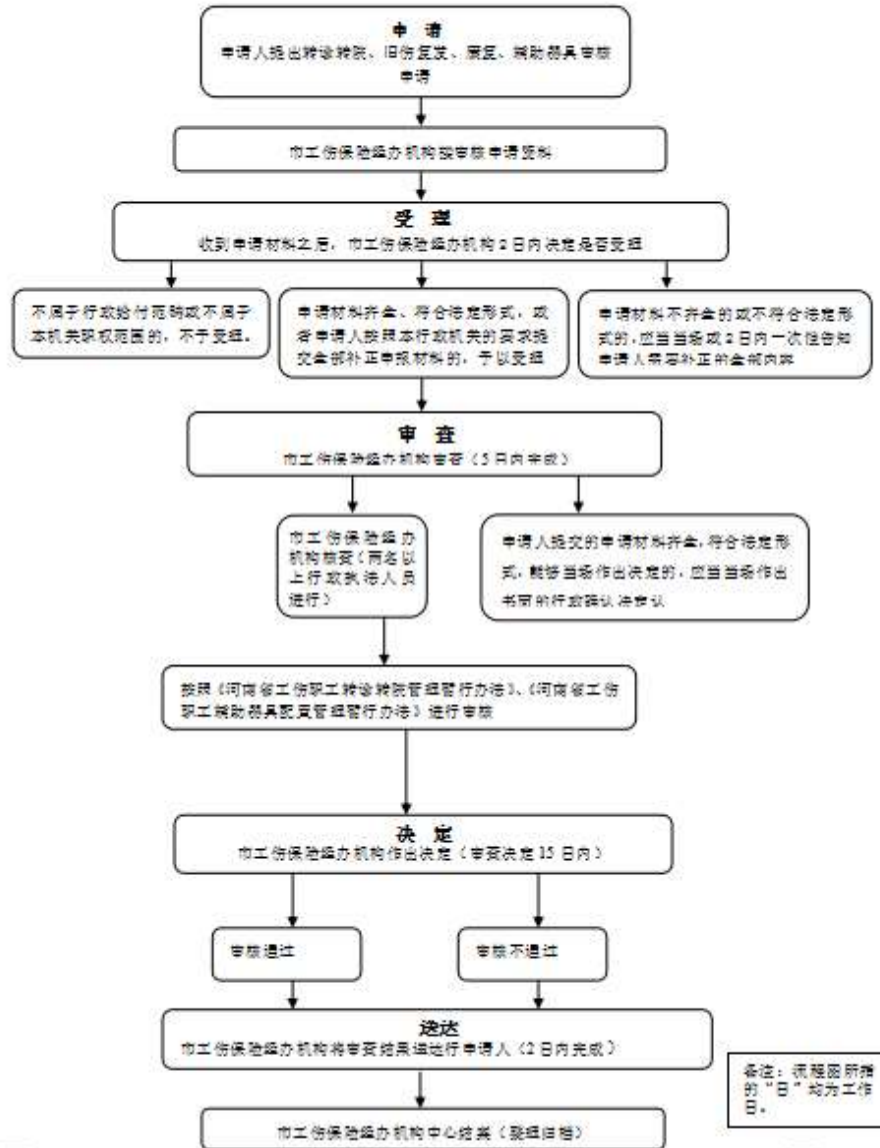
## 机关事业单位工人技术等级考核流程图



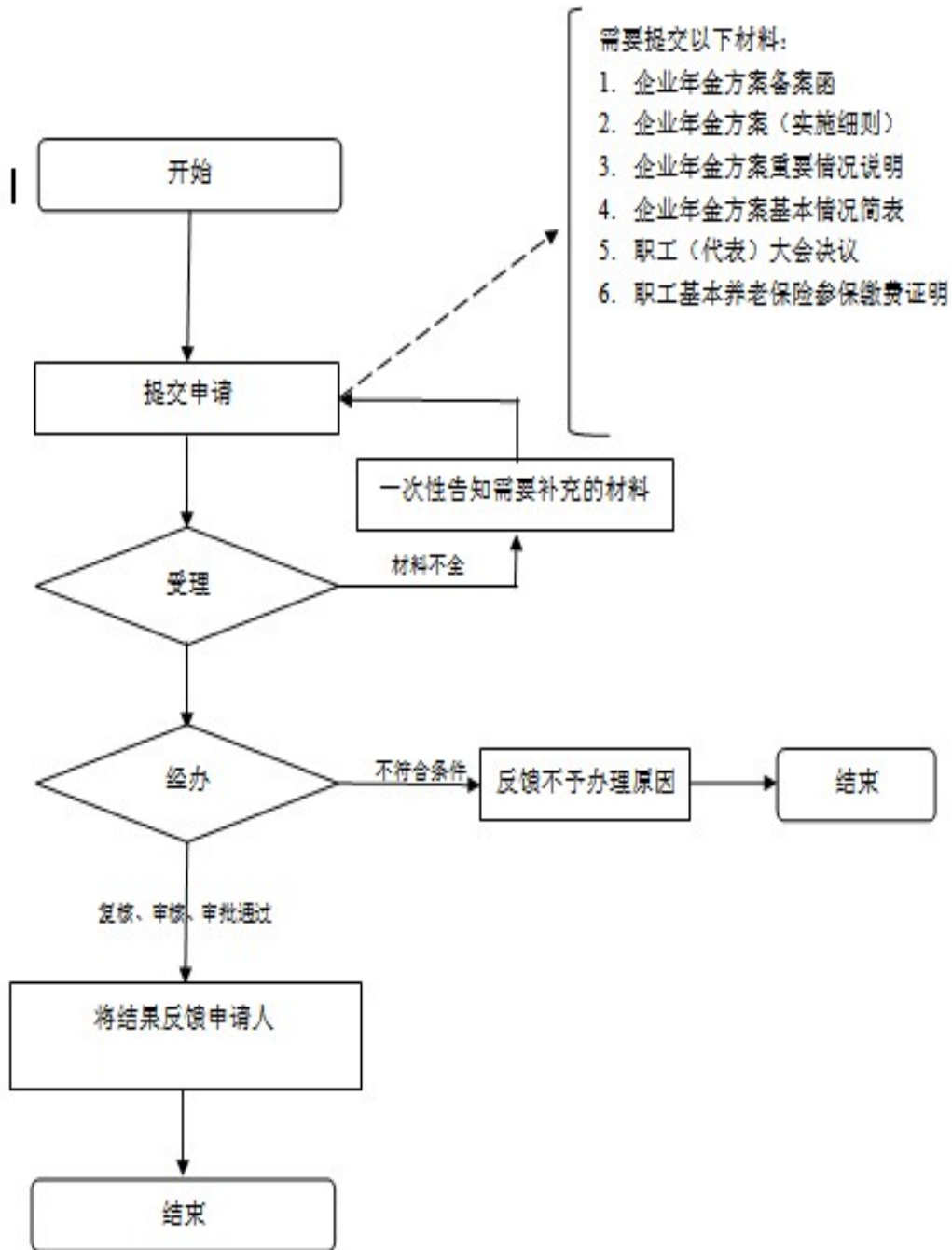
## 技能人员职业资格证书办理流程图



# 市直工伤人员转诊转院、旧伤复发、康复辅助器具审核流程图

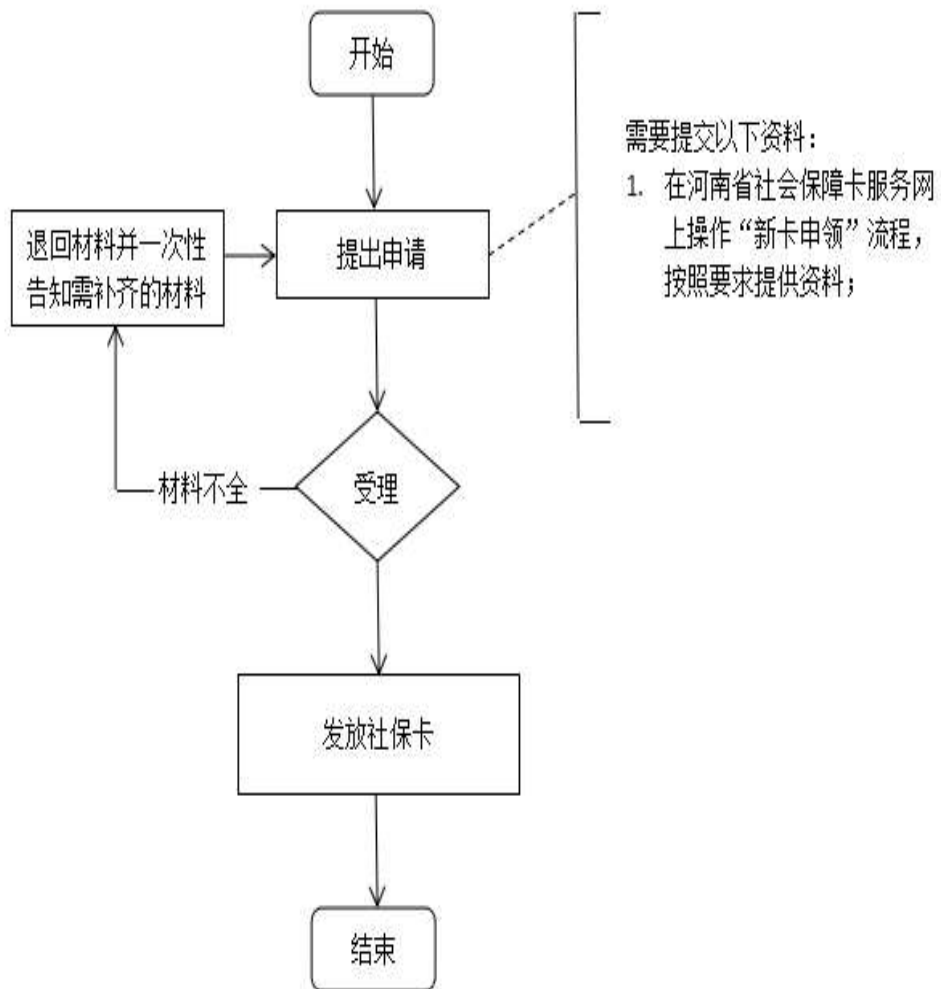


## 企业年金方案备案（子项名称）流程图

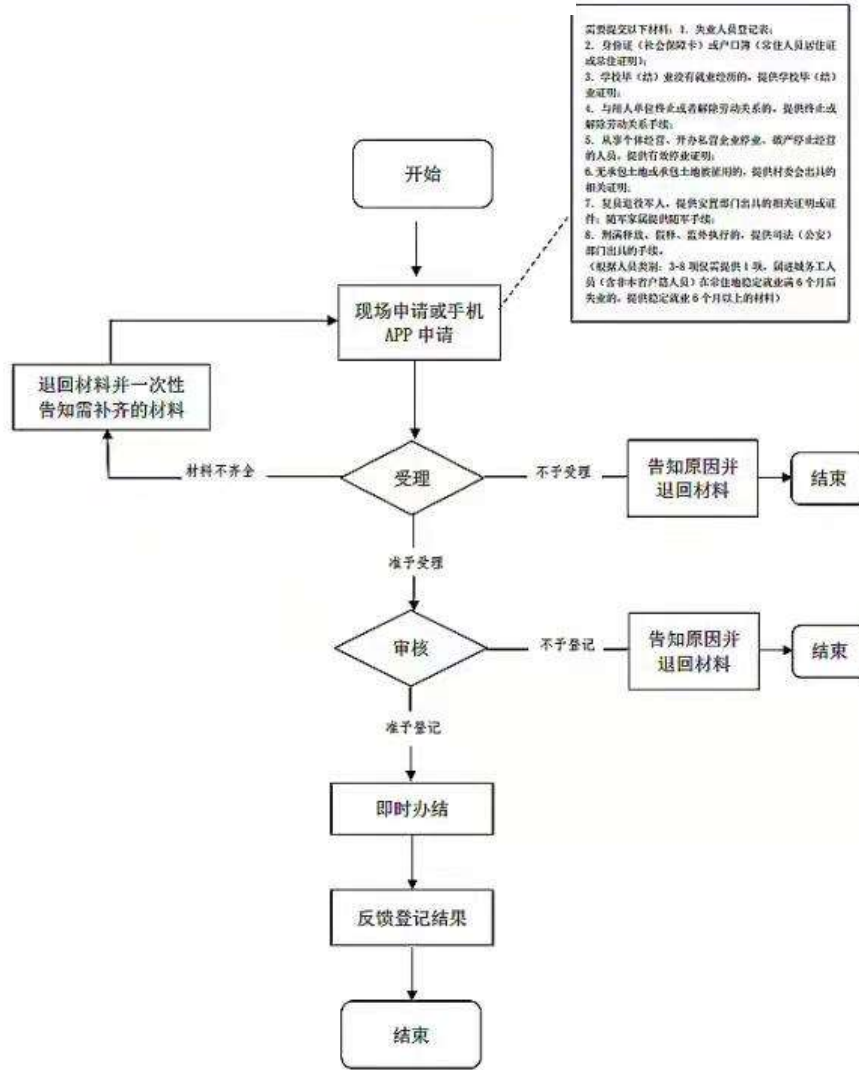




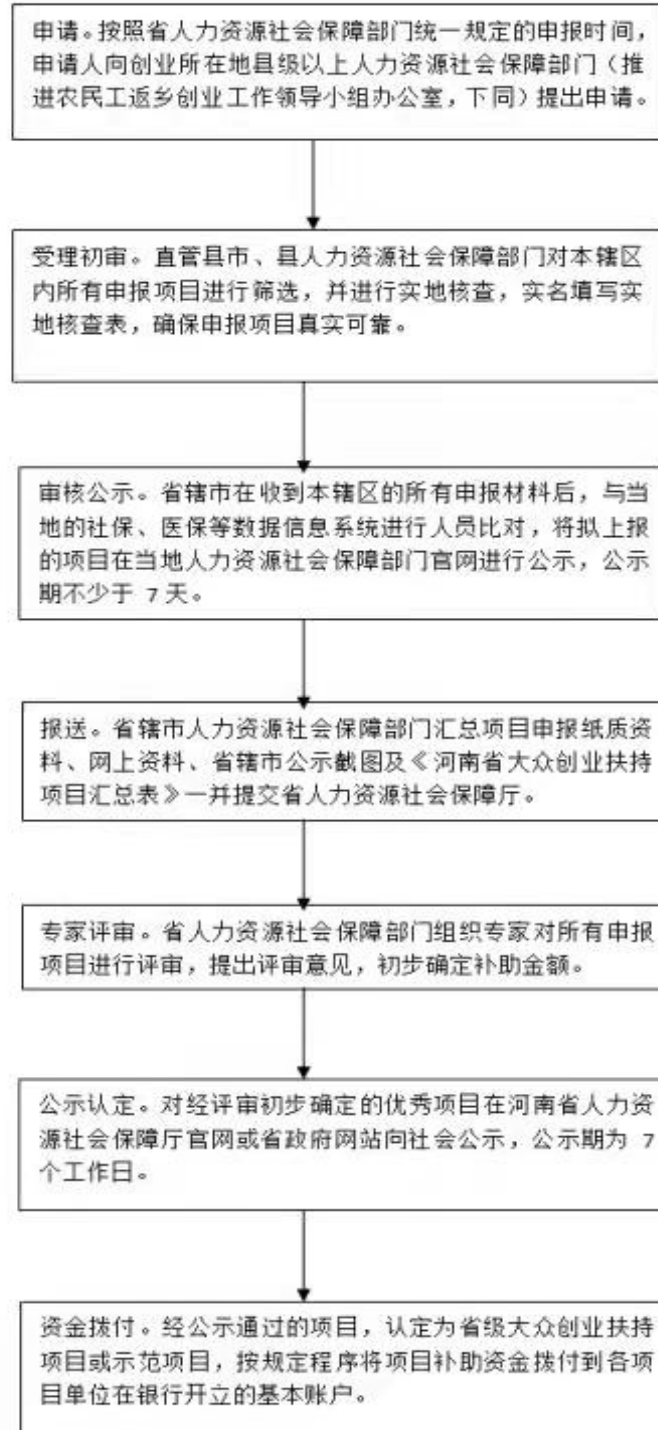
## 社会保障卡申领流程图



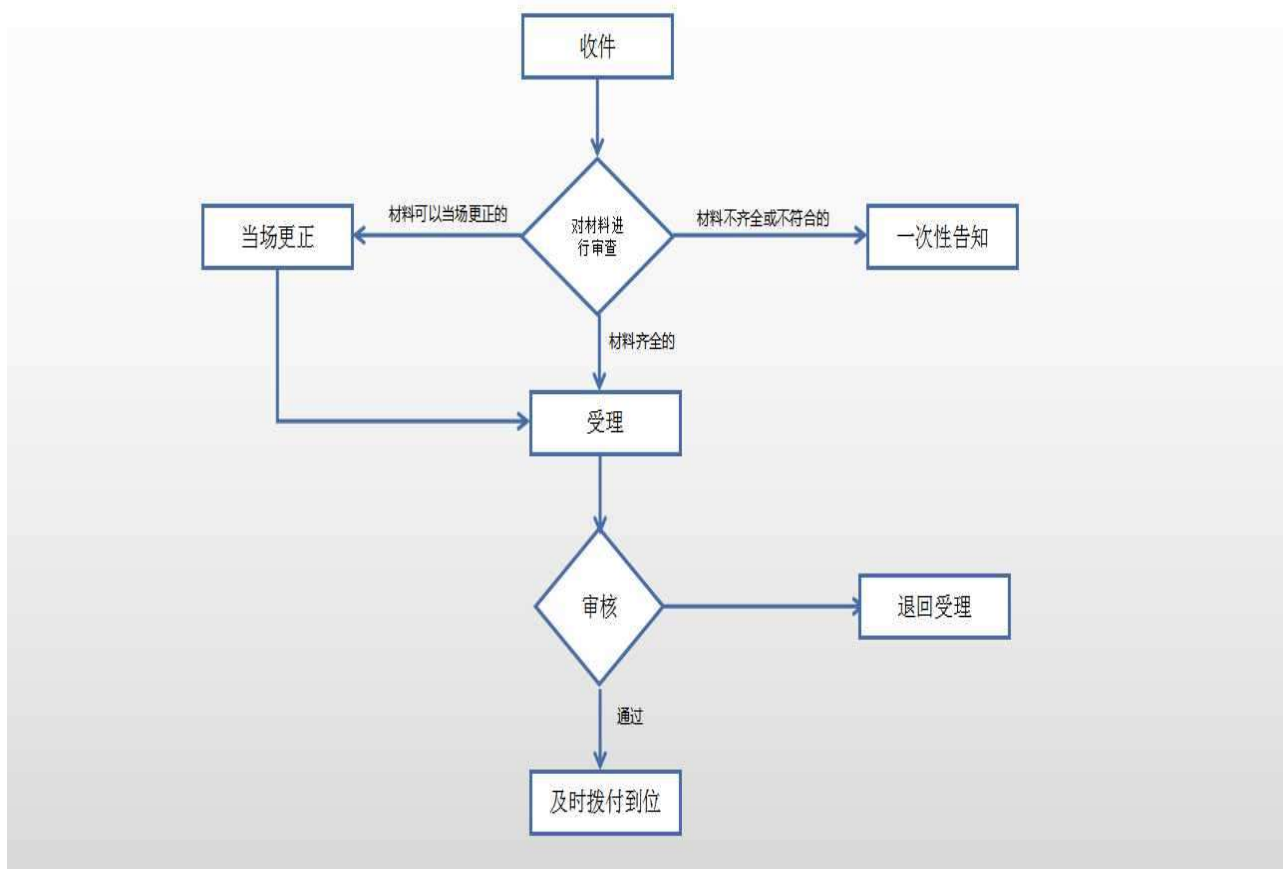
# 失业登记流程图



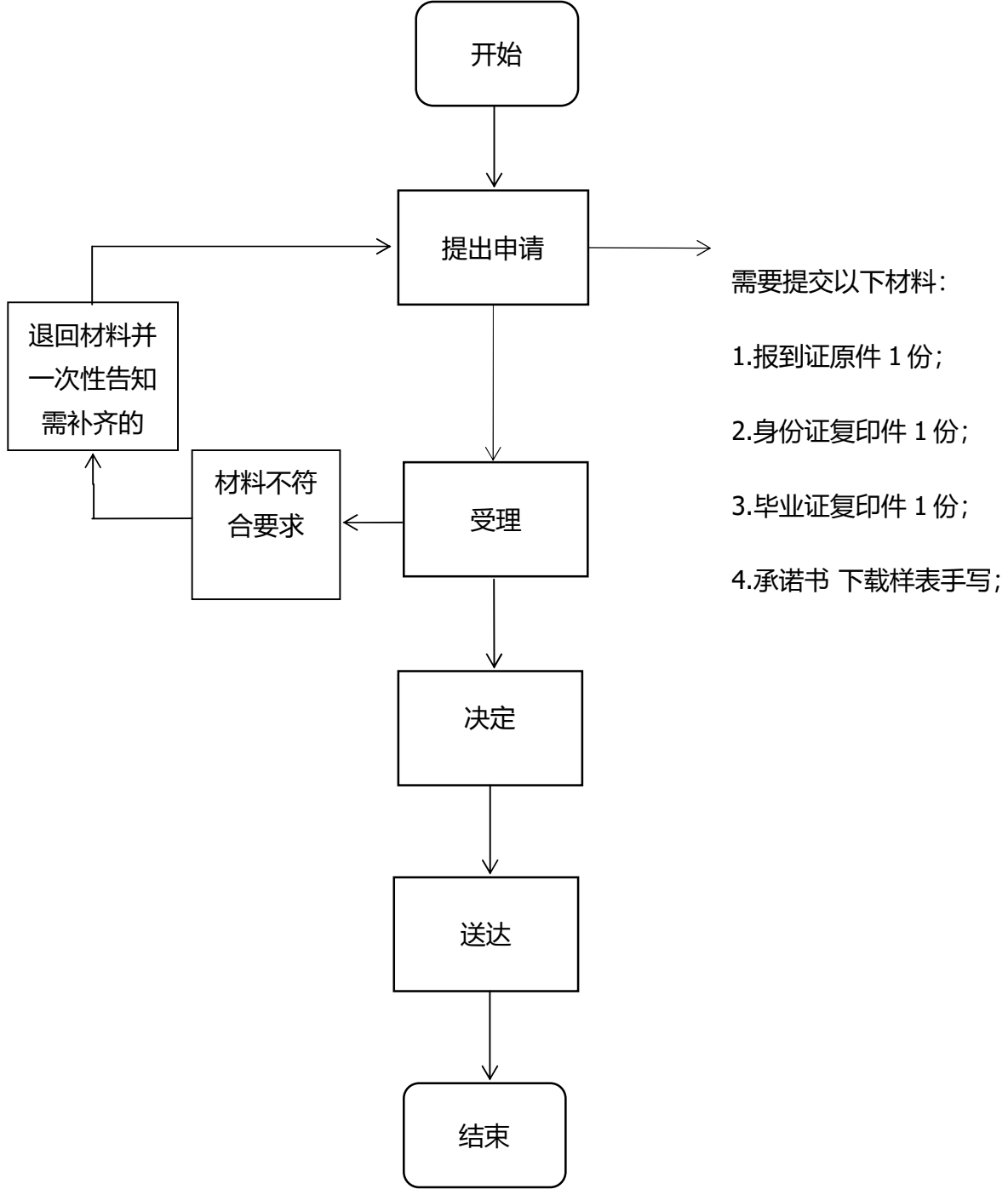
## 大众创业扶持项目流程图



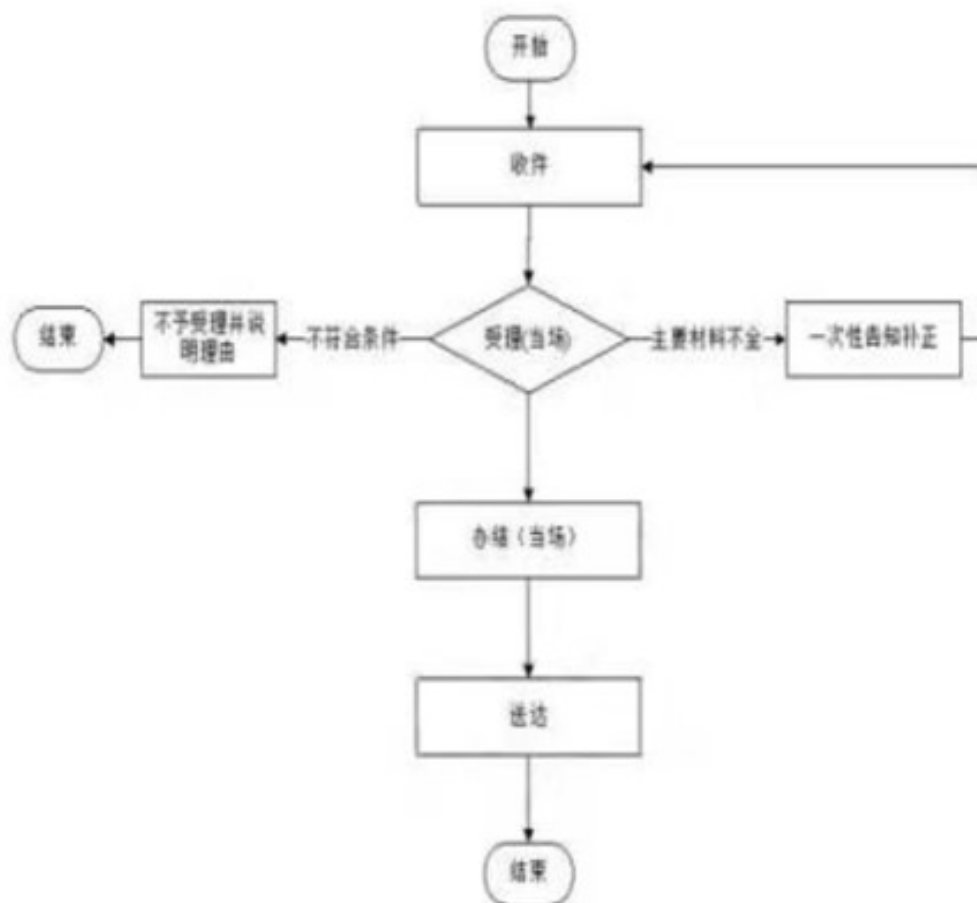
## 公益性岗位补贴申请流程图



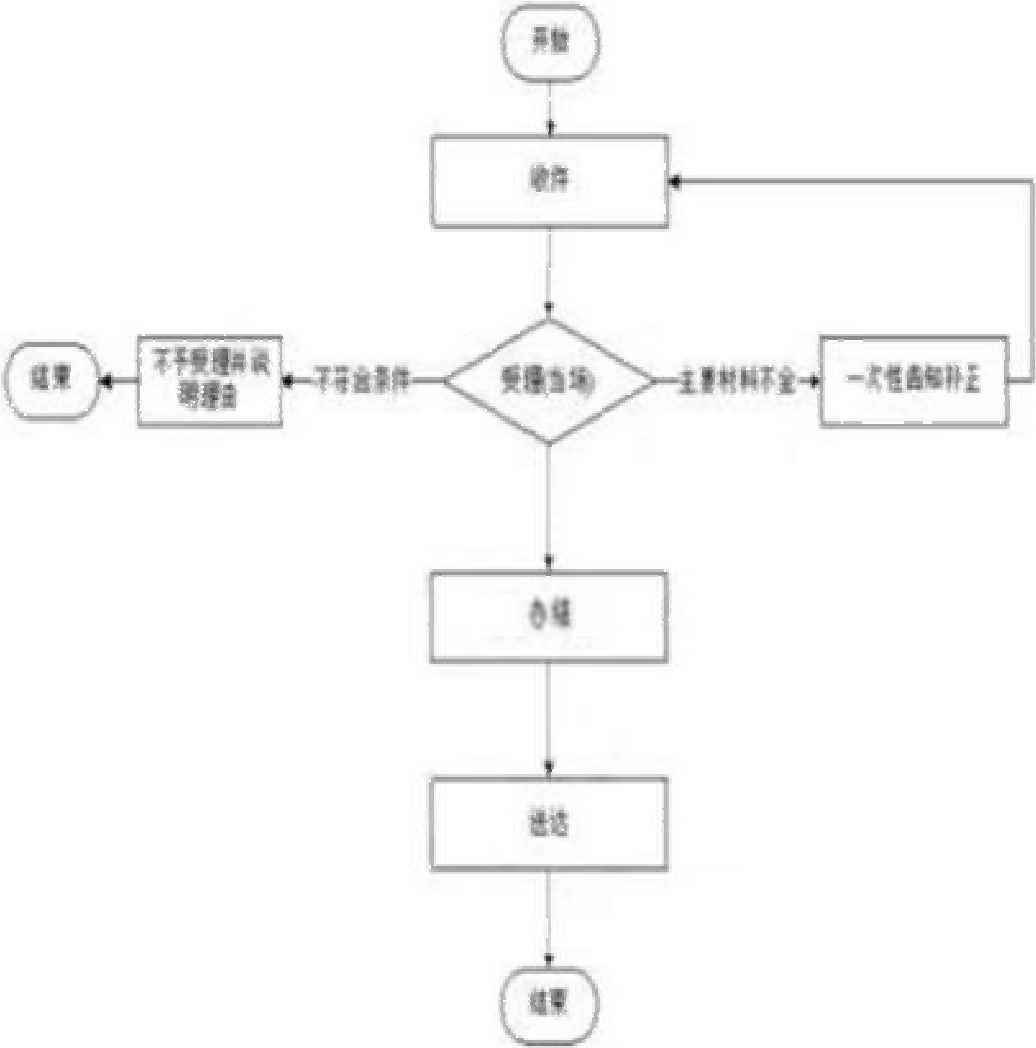
## 高等学校等毕业生接收手续办理流程图



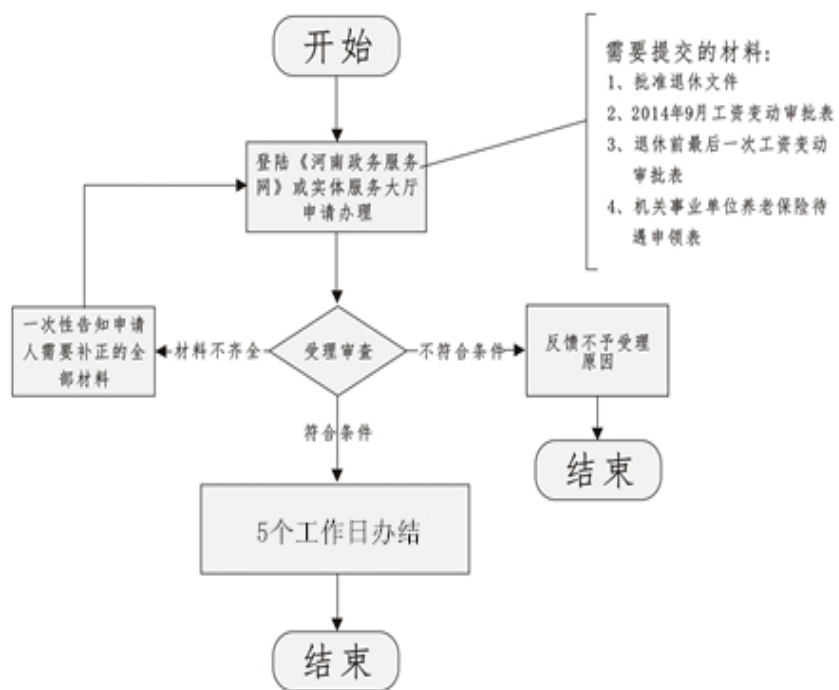
# 劳动用工备案流程图



企业经济性裁员报告、录用未成年工登记备案流程图



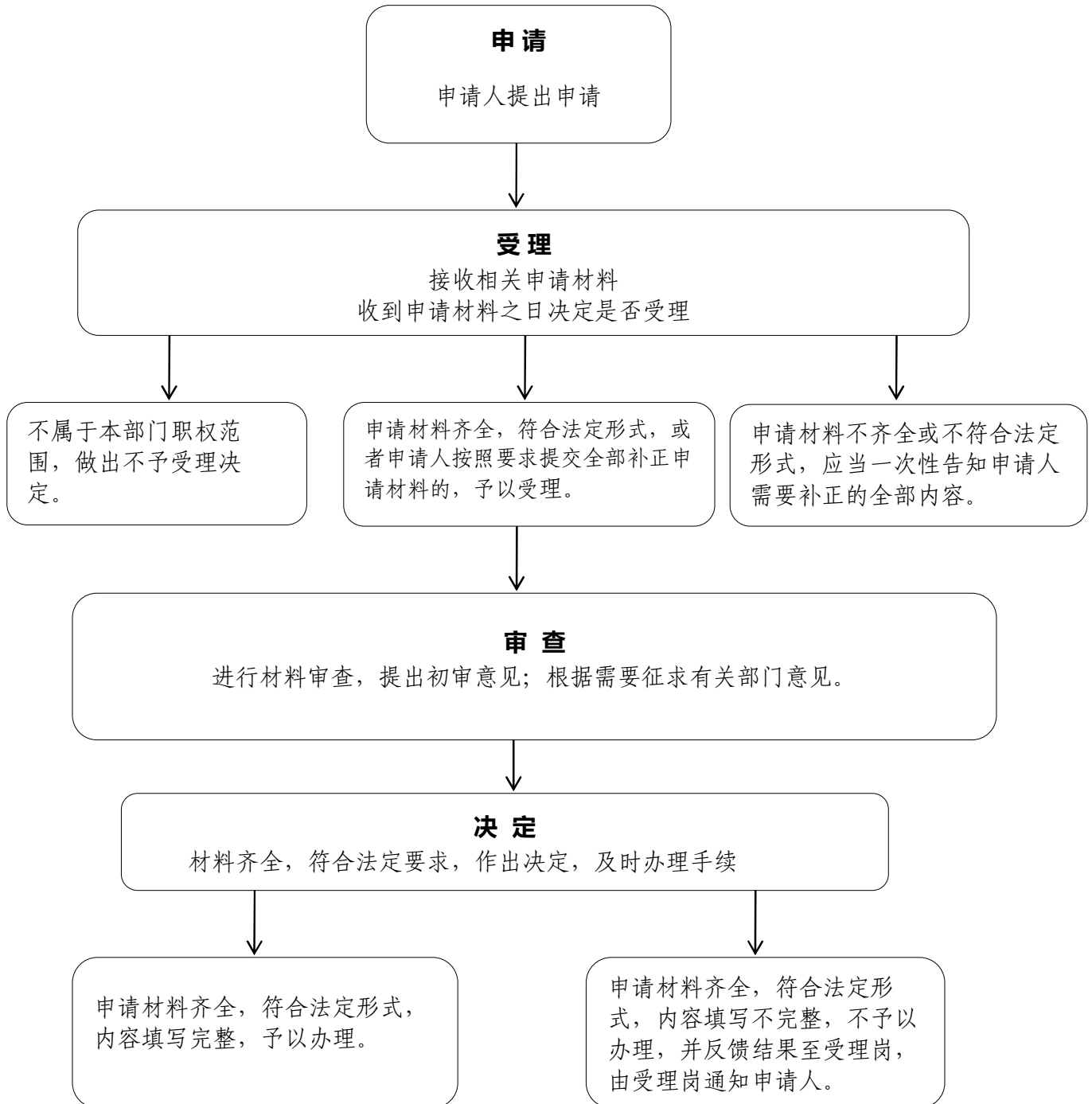
## 机关事业单位退休人员养老保险待遇 (正式待遇) 申领流程图





# 参保人员社会保险（企业职工基本养老保险）待遇核定

## 流程图



## 参保人员社会保险（失业保险）待遇核定流程图

