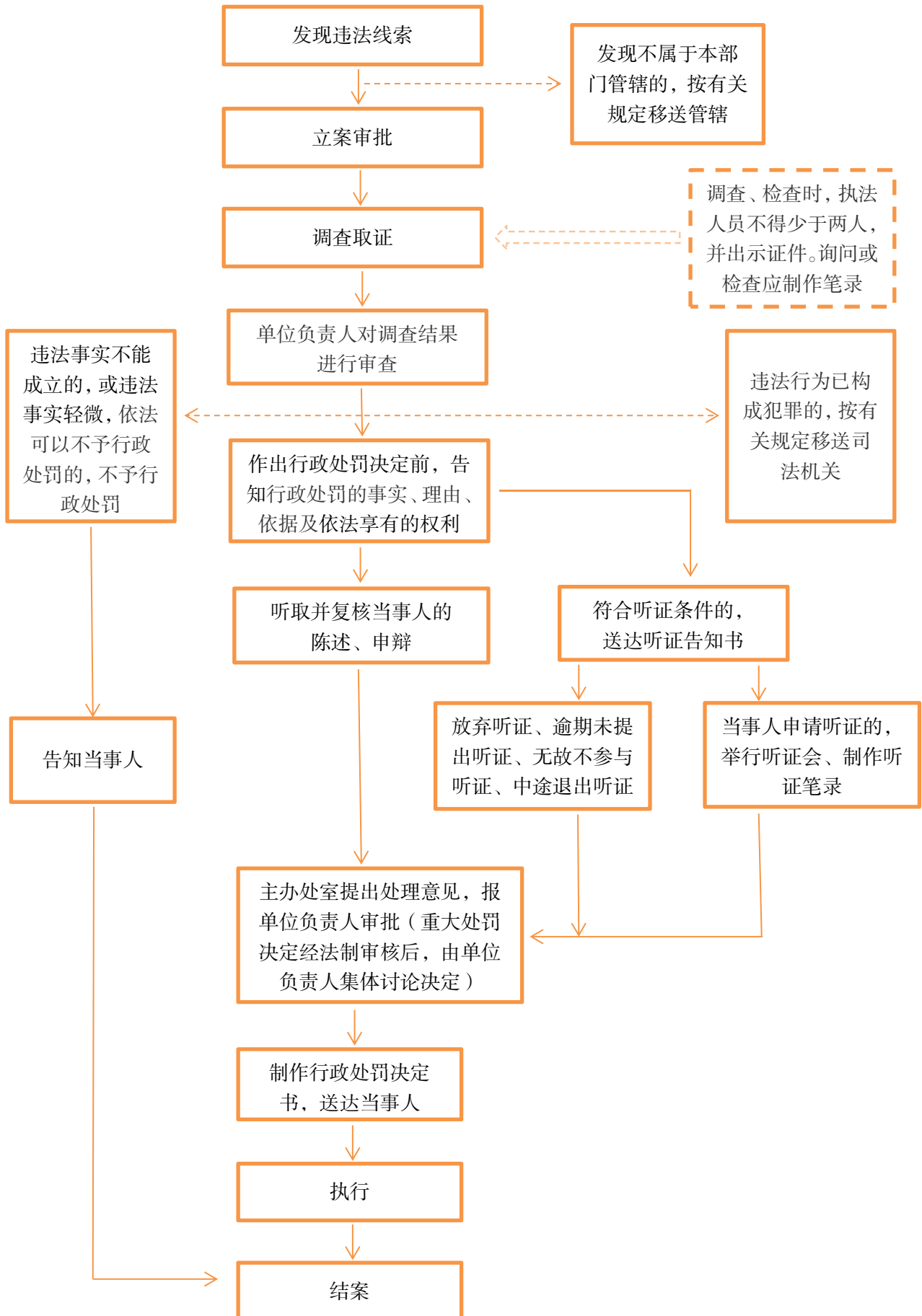
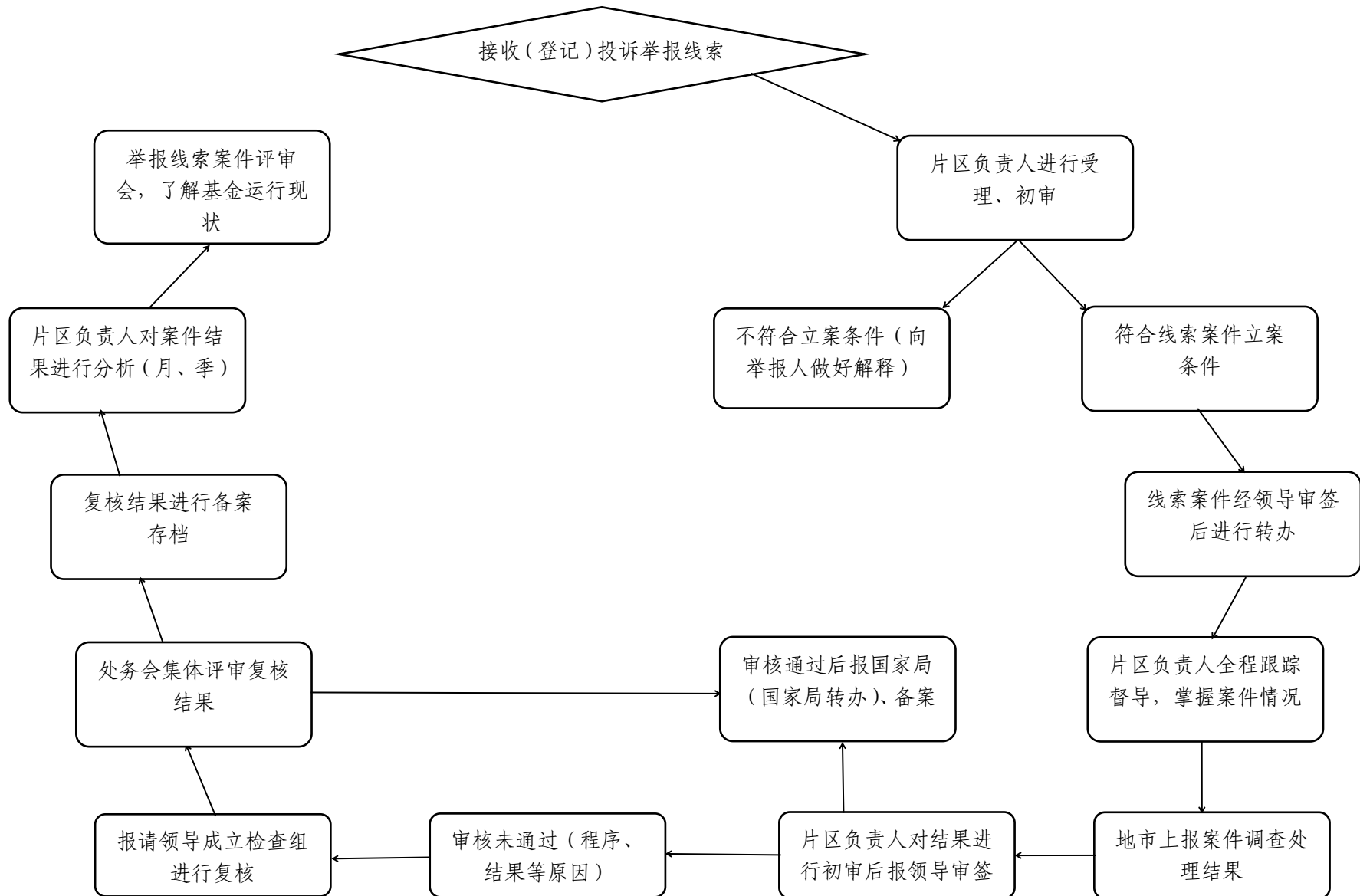


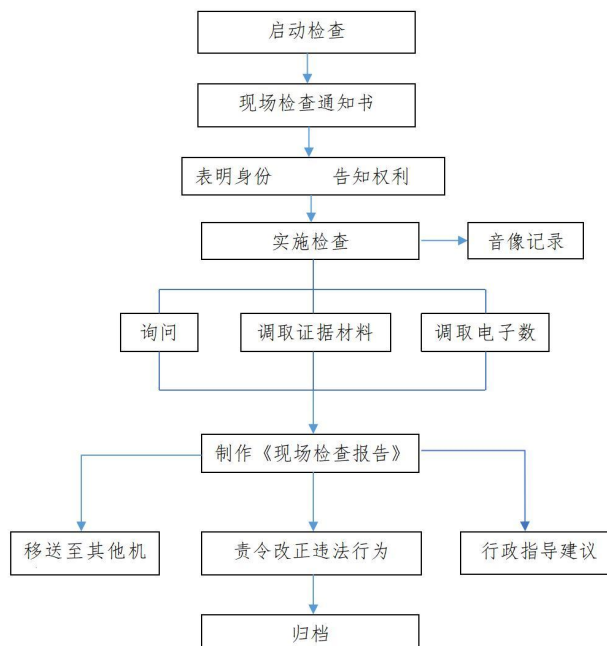
河南省医疗保障行政处罚流程图（试行）



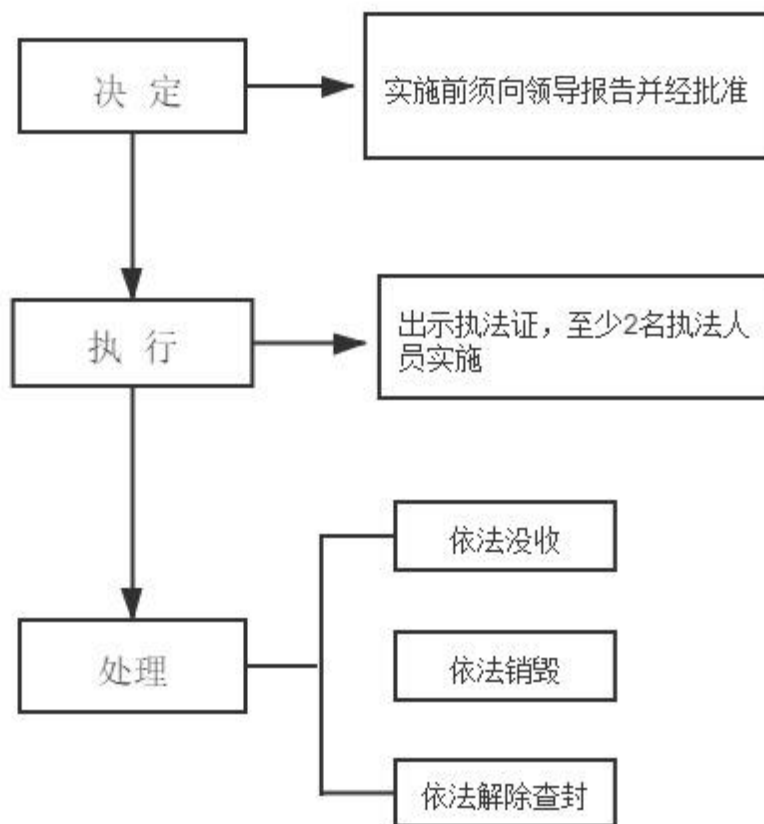
河南省医疗保障局举报线索案件办理基本流程图



安阳市医疗保障局行政检查流程图

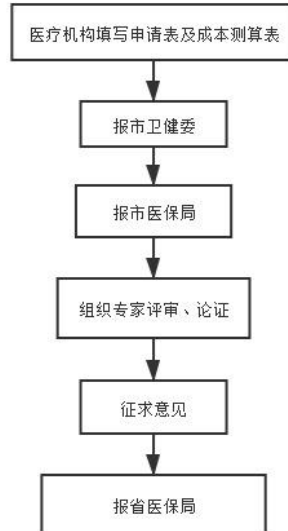


对可能被转移、隐匿或者灭失的资料等予以封存

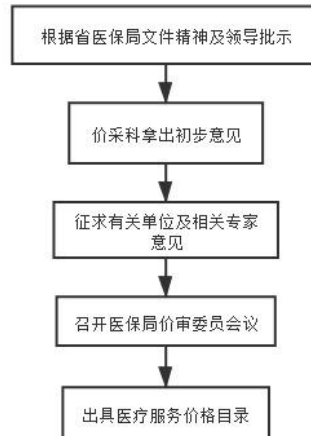


医疗服务价格业务流程图

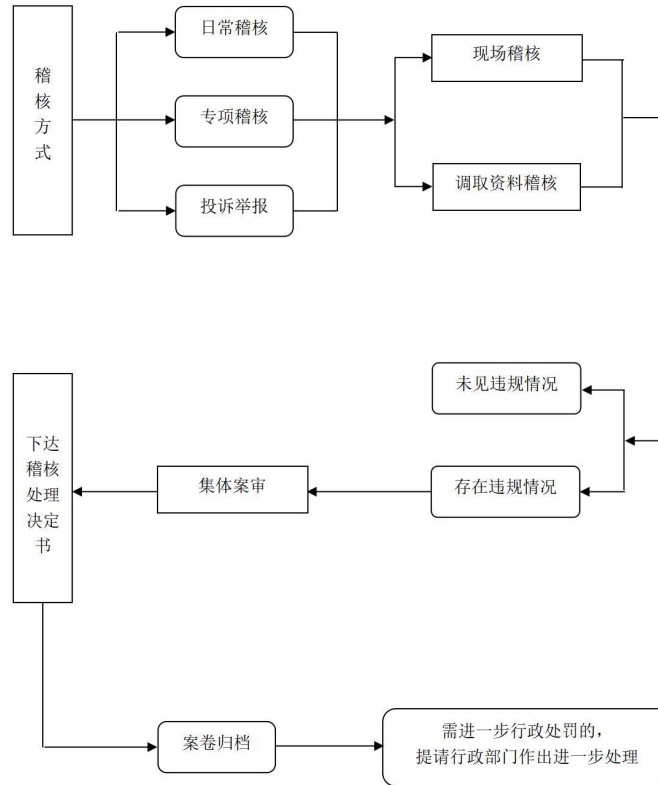
新增医疗服务价格



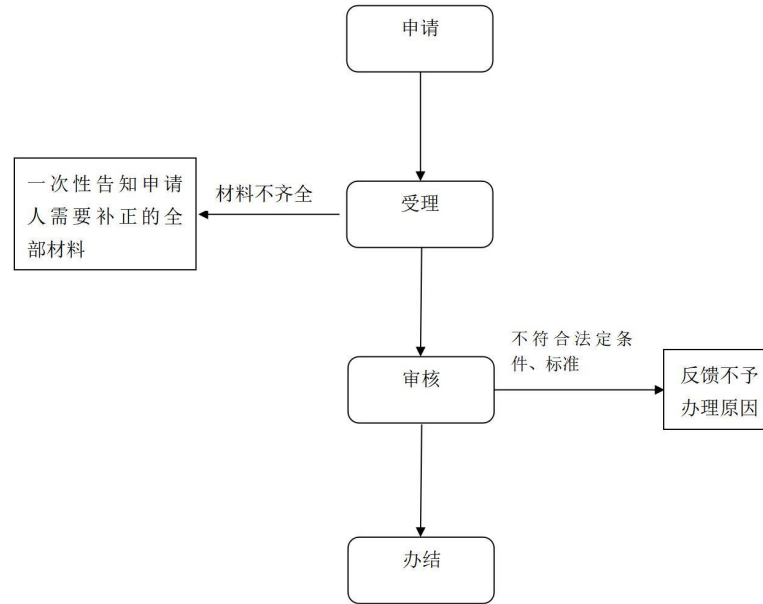
修订医疗服务价格



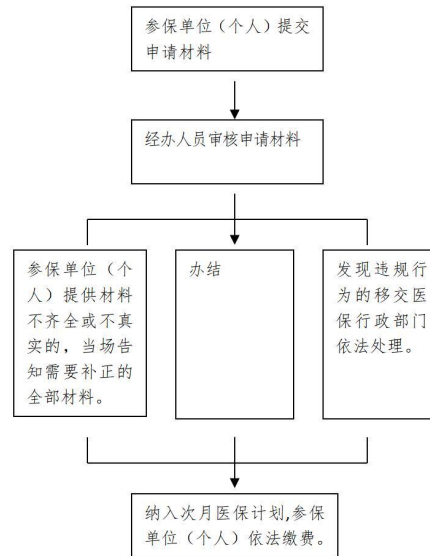
定点医药机构稽核流程图



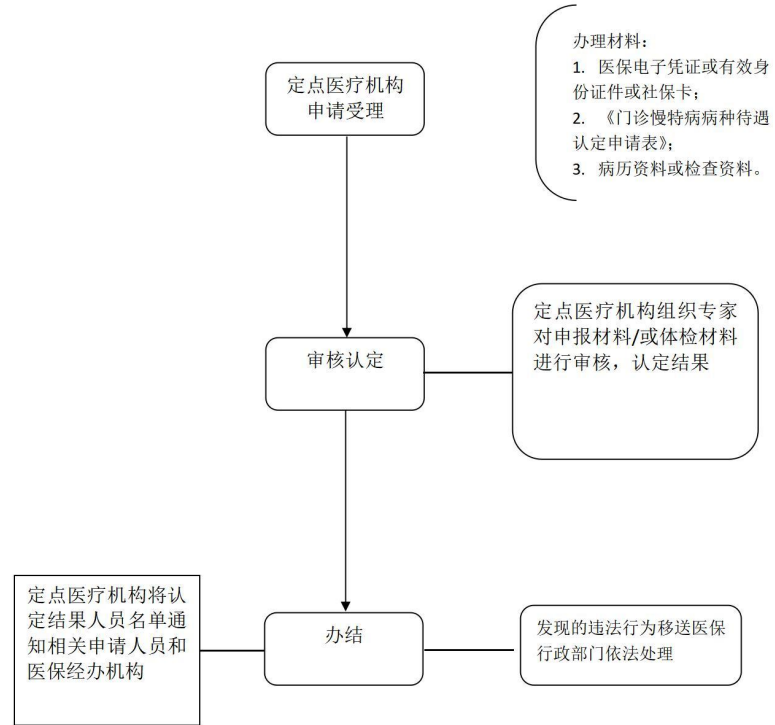
医疗保障登记



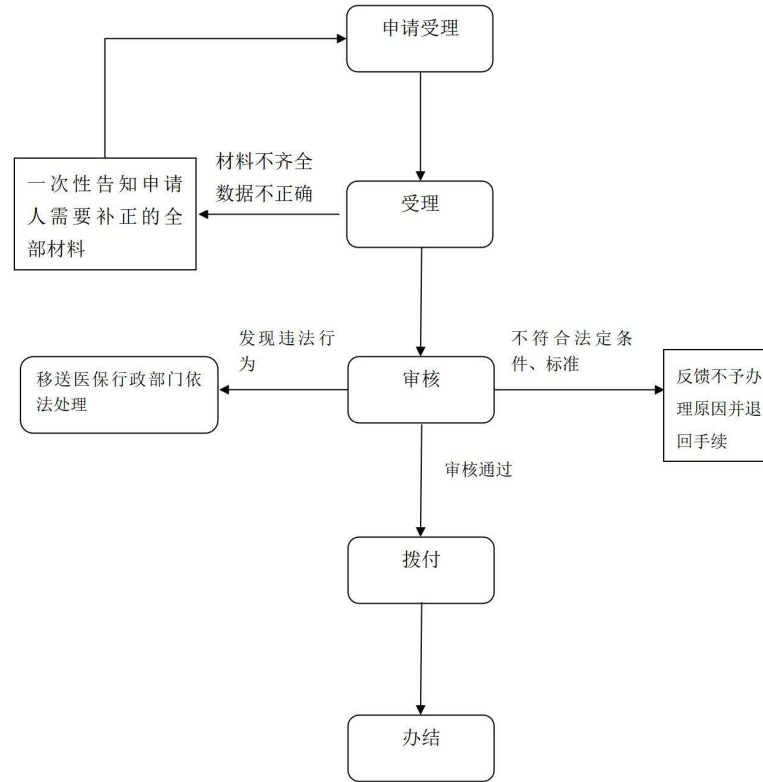
缴费单位应缴的社会保险费 (医疗保障) 数额的核定



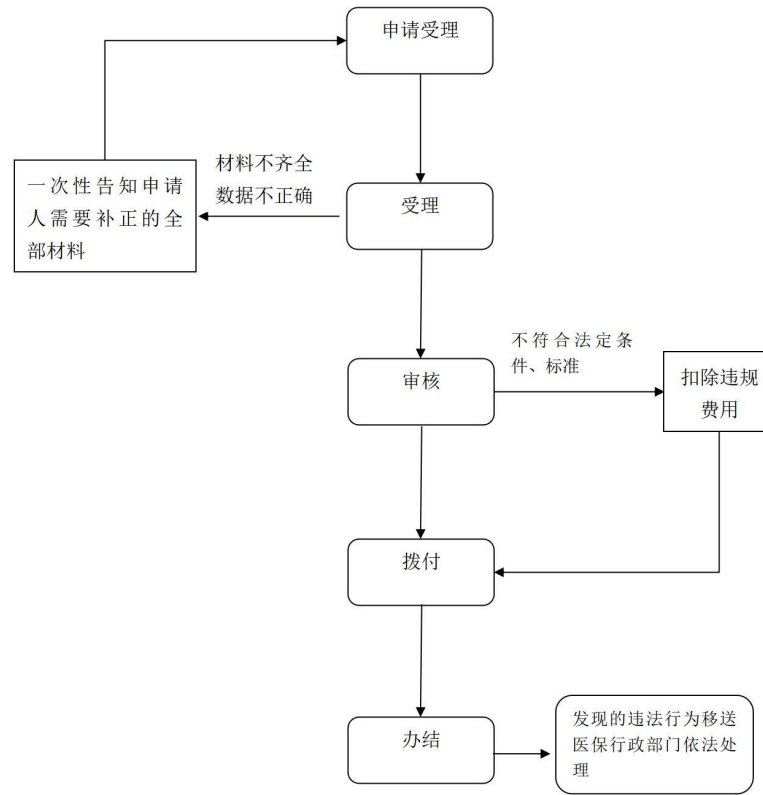
基本医疗保险参保人员享受门诊慢特病 病种待遇认定



生育保险待遇支付



医疗保障待遇支付



定点医药机构协议管理流程图

